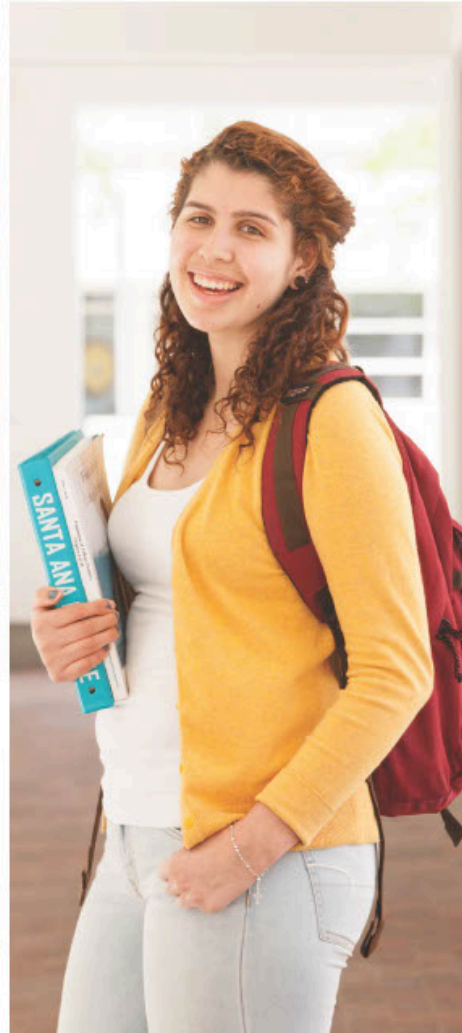




SANTA ANA COLLEGE



Focused On Your Future



2022-2023

CATALOG

2022-2023 Catalog Addendum 2 (July 2023)

Cover	1
Table of Contents	2
Addendum Introduction.....	3
Calendar.....	4
General Education for Associates Degree Plan A: 2022-2023	5
California State University General Education Breadth (CSU GE) Plan B: 2022-2023	7
Intersegmental General Education Transfer Curriculum (IGETC) Plan C: 2022-2023	9
Update(s) to Courses	11
Update(s) to Programs.....	12

2022 - 2023
CATALOG
AND ANNOUNCEMENT OF COURSES
ADDENDUM 2

SANTA ANA COLLEGE

1530 West 17th Street • Santa Ana, CA 92706 • 714-564 6000 • sac.edu

SCHOOL OF CONTINUING EDUCATION

2900 West Edinger Avenue • Santa Ana, CA 92704 • 714-241 5700 • sac.edu/sce

DIGITAL MEDIA CENTER

1300 South Bristol Street • Santa Ana, CA 92706 • 714-241-5812 • ranchodmc.com

ORANGE COUNTY SHERIFF'S REGIONAL TRAINING ACADEMY

15991 Armstrong Blvd. • Tustin, CA 92782 • 714-566-9200 • sac.edu/ocr

JPTC-CN – Joint Powers Fire Training Center-CENTRAL NET

18301 Gothard St., Huntington Beach

RANCHO SANTIAGO COMMUNITY COLLEGE DISTRICT

2323 North Broadway • Santa Ana, CA 92706-1640 • 714-480-7300 • rscdd.edu

Santa Ana College • Santiago Canyon College

Rancho Santiago Community College District serves residents of Anaheim Hills, Orange, Santa Ana, Villa Park, and a portion of Garden Grove.

ACCREDITED BY THE WESTERN ASSOCIATION OF SCHOOLS AND COLLEGES

Santa Ana College and Santiago Canyon College are accredited by the Accrediting Commission for Community and Junior Colleges of the Western Association of Schools and Colleges, (10 Commercial Blvd., Suite 204, Novato, CA 94949, 415 506-0234), an institutional accrediting body recognized by the Commission on Recognition of Postsecondary Accreditation and the U.S. Department of Education.

College Credit Instructional Calendar 2022-2023

FALL SEMESTER 2022	
August 15-19	Faculty Projects
August 16-18	Common College Flex Days
August 22	INSTRUCTION BEGINS
September 4	Last day to add and to drop full-term classes without "W" grade with enrollment fee refund
September 5	Labor Day – Holiday
September 9	Deadline for Graduation Petition for Associate Degrees for Transfer (ADT) - only for eVerify
October 7	Deadline for Degree/Certificate/Certification Petitions
November 11	Veterans Day – Holiday
November 13	Last day to drop semester-length classes with a "W" grade
November 24 – 26	Thanksgiving – Holiday
December 11	INSTRUCTION ENDS
Dec . 24 – Dec . 25	Holiday Break
INTERSESSION 2023	
January 3	INSTRUCTION BEGINS
January 16	Martin Luther King's Birthday – Holiday
January 29	INSTRUCTION ENDS
SPRING SEMESTER 2023	
January 30 - February 3	Faculty Projects
January 30 - February 2	Common College Flex Days
February 6	INSTRUCTION BEGINS
February 10	Deadline for Graduation Petition for Associate Degrees for Transfer (ADT) - only for eVerify
February 17	Lincoln's Birthday – Holiday
February 20	President's Day – Holiday
February 20	Last day to add and to drop full-term classes without "W" grade with enrollment fee refund
March 10	Deadline for Degree/Certificate/Certification Petitions
March 31	Cesar Chavez Day (observed)
April 3 – 9	Spring Recess
May 7	Last day to drop semester-length classes with "W" grade
May 29	Memorial Day – Holiday
June 1	Commencement – Santiago Canyon College
June 2	Commencement – Santa Ana College
June 4	INSTRUCTION ENDS
SUMMER SESSION 2023	
June 13	INSTRUCTION BEGINS
June 19	Juneteenth Holiday
June 23	Deadline for Graduation Petition
July 4	Independence Day – Holiday
August 6	INSTRUCTION ENDS

General Education for Associates Degree Plan A: 2022-2023

PLAN A: 2022-2023

NOTE: This plan does not apply to Associate Degrees for Transfer (AA-T and AS-T).

NOTE: See page 24 for specific requirements for the following:

- IV. A. Reading Proficiency
- B. Mathematics Proficiency
- V. Oral Communication Requirement

Courses taken to meet these proficiencies/requirement must be completed with a grade of "C" or better.

Note: A single course may be used to meet only one category requirement (A-F) in Section II. However, a course may be used to meet both a required proficiency (IV) or requirement (V), as well as one of the categories of General Education Courses on Plan A (II). Courses which meet the requirements for Part II of Plan A at Santiago Canyon College will automatically meet the identical requirements for Part II of Plan A at Santa Ana College.

II. Required General Education Courses

A. Natural Sciences

(minimum 3 semester units)

Anthropology 101, 101L
Astronomy 109, 110, 140
Biology 109 or 109H/109L, 111, 115, 149, 177, 190, 190L, 200, 211, 239, 259
Chemistry 109, 119, 209, 210, 219 or 219H
Earth Science 110 or 110H, 115, 150 or 150H
Environmental Studies 140, 200, 259
Geography 101, 101L, 130
Geology 101, 101L, 140, 150 or 150H, 201
Physical Science 117, 118
Physics 109, 210, 217, 279
Psychology 200

B. Social and Behavioral Sciences

(Minimum 6 semester units)

1. American Institutions (minimum 3 semester units)

History 118, 120 or 120H, 121 or 121H

Political Science 101 or 101H

2. Social Science Elective (minimum 3 units)

Anthropology 100 or 100H

Asian American Studies 150

Black Studies 150

Chicano Studies 150

Child Development 107, 110

Criminal Justice 101 or 101H

Economics 120, 121

Ethnic Studies 102 or 102H, 150 or 150H

Geography 100 or 100H, 102 or 102H, 140, 155

History 101 or 101H, 102 or 102H

Kinesiology, Health Education 112

Law 100

Paralegal 100

Political Science 101 or 101H

Psychology 100 or 100H

Sociology 100 or 100H

C. Humanities

(Minimum 3 semester units)

American Sign Language 110, 111, 116, 210, 211

Anthropology 104 or 104H

Art 100 or 100H, 101, 102, 105, 110

Communications and Media Studies 103, 105, 111

Dance 100 or 100H, 101, 104, 105

Digital Media 101, 102, 103, 104, 105, 107, 113, 164

English 104 or 104H

Foreign Language:

Chinese 101, 102

French 101, 102, 201 or 201H, 202 or 202H

Italian 120, 121

Japanese 101, 102

Spanish 101 or 101H, 102 or 102H, 195A, 195B, 201 or 201H, 202 or 202H

Vietnamese 101, 102

Interdisciplinary Studies 121, 200

Kinesiology, Professional 170

Literature:

Communications & Media Studies 110

English 102 or 102H, 231, 232, 233ABC, 241, 242, 243, 270, 271, 272

Music 101 or 101H, 102 or 102H, 104, 105, 110, 111

Philosophy 106 or 106H, 108, 112, 118

Theatre Arts 100, 105, 120, 123

D. Cultural Breadth

(Three semester units required from D1 or D2)

D1. Ethnic Studies/Women's Studies

American Sign Language 116

Anthropology 104 or 104H, 125

Art 103, 104, 106

Asian American Studies 150

Black Studies 150

Chicano Studies 150

Child Development 221

Communication Studies 103 or 103H, 206 or 206H

English 104 or 104H, 245, 246, 278

Ethnic Studies 102 or 102H, 150 or 150H,

History 123, 124 or 124H, 125, 127, 146, 150, 151, 153, 163, 181

Kinesiology, Health Education 102

Music 103

Nutrition and Food 120

Political Science 235

Psychology 170

Women's Studies 101, 102

D2. International Perspective

Anthropology 100 or 100H

Business 106

Criminal Justice 209

Dance 105

Digital Media 102, 105

English 271, 272

Geography 100 or 100H, 102

Interdisciplinary Studies 117H

Kinesiology, Professional 150

Music 102 or 102H

Philosophy 112

Theatre Arts 105

E. Language and Rationality

(Minimum 6 semester units)

1. **English Composition** (minimum 3 semester units)

Courses fulfilling the written composition requirement include both expository and argumentative writing. The English composition requirement may be met by completing English 101 or 101H with a grade of "C" or better.

2. **Communication and Analytical Thinking**

(Minimum 3 semester units)

Includes mathematics, logic, statistics, computer languages and programming and related disciplines.

Business 130

Communication Studies 102 or 102H, 140, 145, 150

Computer Science 100, 105

Counseling 144

Digital Media 164

English 102 or 102H, 103 or 103H

Mathematics 082, 083, 084, 105, 140, 140S, 145, 150, 162,

170, 180, 185, 204, 219 or 219H or 219S, 221, 280, 287

Philosophy 110 or 110H, 111
Psychology 210
Reading 101, 102, 150

F. Lifelong Understanding and Self-Development

(Minimum 3 semester units)

Note: Take one course from each group. No more than one semester unit may be counted from F2. Three semester units for Health Education and one semester unit for Kinesiology may be granted on the basis of military service. See page 55 for additional information.

1. Completion of one of the following:

Child Development 107
Counseling 100, 116, 124, 125, 128
Entrepreneurship 100
Fashion Design Merchandising 103
Interdisciplinary Studies 155
Information Studies 100
Kinesiology, Health Education 101 or 101H, 102, 103, 104, 108
Kinesiology, Professional 125, 160
Mathematics 030
Nutrition and Food 115 or 115H
Philosophy 111
Psychology 140, 160, 230

Sociology 112
Study Skills 109

2. Completion of one of the following:

Dance 102, 122A, 122B, 125A, 125A, 125B, 201A, 201B, 206A, 206B, 219A, 219B
Kinesiology, Activities 107A, 107B, 107C, 123, 140A, 150A, 155A, 160A, 169A, 169B, 170A, 200A, 200B, 200C, 211A, 211B, 220A, 220B, 220C, 226A, 230A, 260A, 260B, 260C, 265A, 265B, 265C, 270A, 290A, 290B
Kinesiology, Adapted Activities 201A, 202A, 202B, 205A, 208A, 208B, 211A, 211B
Kinesiology, Aerobic Fitness 140A, 143A, 144A, 146A, 146B, 150A, 156A, 156B, 157A
Kinesiology, Aquatics 201A, 201B
Kinesiology, Fitness 112A, 112B, 112C, 114A, 114B, 115A, 115B, 115C, 147A, 147B
Kinesiology, Intercollegiate Athletics 125, 128, 133, 171, 201, 202, 204, 206, 209, 210, 211, 212, 213, 216, 217, 218, 219, 220, 221, 223, 227, 230, 231, 232, 235, 240, 261, 262, 270, 271, 281, 291, 293
Kinesiology, Professional 155, 165, 175, 195, 200, 275
This requirement (F) is met for Fire Technology (as long as Fire Technology 121 and 121L are taken as part of the program), Nursing, and Occupational Therapy Assistant by completion of the major.

California State University General Education Breadth (CSU GE) Plan B: 2022-2023

Significant changes were made to this general education (GE) pattern effective Fall 2021. Area D, Social Sciences was reduced from nine units to six units. Area F, Ethnic Studies, is a new three unit requirement. Students who began at SAC in Fall 2021 or later should follow the course pattern below. However, students who began attending SAC (or another CCC or CSU) prior to Fall 2021 will be permitted to complete the previous CSU GE pattern if they maintain CSU continuous enrollment. Please consult a SAC counselor for additional information.

PLAN B: 2022-2023

NOTE: These requirements apply to all students. Students planning to graduate from one of the 23 campuses of the California State University must complete 48 semester units in general education breadth courses. A student may complete 39-40 units of general education at Santa Ana College prior to transfer. Nine semester units of general education coursework must be completed at the upper division level after transfer.

CERTIFICATION OF GENERAL EDUCATION

1. Santa Ana College is authorized to certify a maximum of 39-40 general education units.
2. CSU-GE Certification indicates that a transfer student has met CSU lower division GE requirements. Students may earn full or subject area certification.
3. Pass/No Pass grades are accepted for certification in all areas; however, they are not recommended for transfer credit in basic skill areas. (A. English language, Communication and Critical Thinking, A1, A2, and A3; and B4. Mathematics/Quantitative Reasoning.) In addition, letter grades may be recommended or required for specific courses in a given major. Each CSU campus may also limit the total number of units graded credit.
4. A single course may not meet more than one general education requirement.
5. Requests for certification should be made to the Office of Admissions and Records during the semester prior to the last term of attendance. Please consult the class schedule or the Counseling Department for deadline information.
6. Certification of coursework from other colleges will be granted to students whose last community college of attendance prior to transfer is Santa Ana.
7. Courses taken at other California Community Colleges will be applied to the subject areas in which they were listed by the institution where the course was completed.
8. Courses taken at other regionally accredited private/out of state institutions (which do not maintain a CSU certification list) will be placed in the subject areas for which Santa Ana College has equivalent courses. In some cases, non-equivalent courses may also be considered. Consult a counselor for additional information. Courses completed at foreign institutions are not acceptable for certification.
9. Students earning an AS-T in Biology must complete CSU-GE Breadth for STEM. See "Associate Degrees for Transfer" on page 20 for additional information.

IMPORTANT NOTE: The list of certifiable courses will be subject to change year by year, but students are assured that courses taken to meet general education-breadth requirements will be honored **if they are approved for the academic year in which they are taken. Courses on this list are approved beginning Fall 2022 and are valid through Summer 2023.**

TRANSFER CREDIT

Students may transfer up to 70 semester units to the CSU system. Sixty transferable units are needed for junior standing. All courses used for CSU transfer credit must be numbered 100 or above in the Santa Ana College catalog.

A. English Language Communication and Critical Thinking

(Minimum 9 semester/12 quarter units)

The 9 units selected from this area must include at least one course each from A1, A2, and A3. Each course must be completed with a grade of "C" or better.

A1: Oral Communication

Communication Studies 101 or 101H, 102 or 102H, 103 or 103H, 140, 145, 150

A2: Written Communication

English 101 or 101H

A3: Critical Thinking

Communication Studies 140

Counseling 144

English 102 or 102H (102 and 102H not accepted in A3 if completed prior to Fall 2011), 103 or 103H

Philosophy 110 or 110H, 111

Reading 150

B. Scientific Inquiry and Quantitative Reasoning

(Minimum 9 semester/12 quarter units)

The 9 units selected from this area must include at least one course each from B1, B2, and B4. The 9 units must also include a corresponding lab component. (Lab classes are in **bold**.) Courses in B4 must be completed with a grade of "C" or better.

B1: Physical Science

Astronomy **109, 110**

Chemistry **109, 115, 119, 209, 210, 219 or 219H, 229**

Earth Science 110 or 110H, **115**, 150 or 150H

Environmental Studies 140

Geography 101, 130

Geology 101, 140, 150 or 150H, **201**

Physical Science **115**, 117

Physics **109, 210, 211, 217, 227, 237, 279, 289**

B2: Life Science

Anthropology 101

Biology 109 or 109H, **111, 115, 139, 149**, 177, 190, **211, 212, 214,**

229, 239, 249, 259

Environmental Studies **259**

Psychology 200 (Fall 2017 or later completion)

B3: Laboratory Activity

Anthropology **101L**

Astronomy **140**

Biology **109L, 111, 115, 139, 149, 190L, 211, 212**, 214, 229, 239, 249, 259

Chemistry **109, 115, 119, 209, 210, 219 or 219H, 229**

Earth Science **115**

Environmental Studies **259**

Geography **101L**

Geology **101L, 201**

Physics **109, 210, 211, 217, 227, 237, 279, 289**

Physical Science 115, **118**

B4: Mathematics/Quantitative Reasoning

Courses must be completed with a grade of "C" or better.

Business 130 (Fall 2019 or later completion) (Does not meet the Math Proficiency requirement for AA and AS degrees)

Mathematics 105, 140, 140S, 145, 150, 162, 170, 180, 185, 204, 219 or 219H, 219S, 280, 287

Psychology 210

C. Arts and Humanities

(Minimum 9 semester/12 quarter units)

This area must include one course from C1 and one course from C2.

C1: Arts: Art, Cinema, Dance, Music, Theatre

Art 100 or 100H, 101, 102, 103, 104, 105, 106, 108
 Communications & Media Studies 103
 Dance 100 or 100H, 101, 102, 104, 105
 Digital Media 102, 103, 104, 107, 113
 English 233A, 233B, 233C
 Interdisciplinary Studies 121
 Music 101 or 101H, 102 or 102H, 103, 104, 105, 110 (Fall 2015 or later completion), 111
 Photography 150
 Theatre Arts 100, 105, 120, 123

C2: Humanities: Literature, Philosophy, Languages Other Than English

American Sign Language 110, 111, 116, 210
 Chinese 101, 102
 Digital Media 105
 English 102 or 102H, 220, 231, 232, 233A, 233B, 233C, 241, 242, 243, 245, 246, 270, 271, 272, 278
 French 101, 102, 201 or 201H, 202 or 202H
 History 101 or 101H, 102 or 102H, 150, 151, 153, 163
 Interdisciplinary Studies 200
 Italian 120, 121
 Japanese 101, 102
 Kinesiology, Professional 170
 Philosophy 106 or 106H, 108, 112, 118
 Spanish 101 or 101H, 102 or 102H, 195A, 195B, 201 or 201H, 202 or 202H
 Vietnamese 101, 102

D. Social Sciences

(Minimum 6 semester/9 quarter units)
 Anthropology 100 or 100H, 103, 104 or 104H, 105, 125
 Asian American Studies 150*
 Biology 200
 Black Studies 150*
 Chicano Studies 150*
 Child Development 107, 110
 Communication Studies 103 or 103H, 206 or 206H
 Communications & Media Studies 105, 111
 Computer Science 100
 Counseling 150
 Criminal Justice 101 or 101H
 Economics 120, 121
 English 104 or 104H, 245, 278
 Environmental Studies 200
 Ethnic Studies 102 or 102H, 150H* or 150H*
 Geography 100 or 100H, 102, 140
 History 101 or 101H, 102 or 102H, 105, **118, 120 or 120H, 121, or 121H, 123, 124 or 124H**, 125, **127**, 133, **146**, 150, 151, 153, 163, 181
 Interdisciplinary Studies 117H, 155
 Kinesiology, Health Education 112
 Kinesiology, Professional 150
 Law 100
 Paralegal 100 (Fall 2021 or later completion)
 Political Science **101** or **101H**, 200 or 200H, 201, 220, 235

Psychology 100 or 100H, 140, 157, 160, 170, 200, 219, 230, 240, 250
 Sociology 100 or 100H, 112, 140 or 140H, 240
 Women's Studies 101, 102

NOTE: The CSU graduation requirement in UNITED STATES HISTORY, CONSTITUTION AND AMERICAN IDEALS may be met by completing Political Science 101 or 101H and one U. S. History course from the following:

History 118, 120 or 120H, 121 or 121H, 123, 124 or 124H, 127, 146.

These courses (in **bold** in area D above) may also be used to meet 6 of the 6 Area D unit requirements.

E. Lifelong Learning and Self-Development

(Minimum 3 semester/4 quarter units)
 Three units should be selected from below with no more than one unit from E2. Three units of credit are allowed in E for former military personnel with a DD-214.

E1:

Child Development 107, 229
 Counseling 100, 116, 124, 125, 128
 Fashion Design Merchandising 103 (Fall 2021 or later completion)
 Interdisciplinary Studies 155
 Kinesiology, Health Education 101 or 101H, 102, 103, 104
 Kinesiology, Professional 125
 Nutrition and Food 115 or 115H
 Psychology 140, 157, 230
 Sociology 112
 Study Skills 109 (Fall 2013 or later completion)

E2:

Kinesiology, Activities 107A, 107B, 107C, 123, 140A, 150A, 155A, 160A, 169A, 169B, 170A, 200A, 200B, 200C, 211A, 211B, 220A, 220B, 220C, 226A, 230A, 260A, 260B, 260C, 265A, 265B, 265C, 270A, 290A, 290B
 Kinesiology, Adapted Activities 201A, 202A, 202B, 205A, 208A, 208B, 211A, 211B
 Kinesiology, Aerobic Fitness 140A, 143A, 144A, 146A, n146B, 150A, 156A, 156B, 157A
 Kinesiology, Aquatics 201A, 201B
 Kinesiology, Fitness 112A, 112B, 112C, 114A, 114B, 115A, 115B, 115C, 147A, 147B
 Kinesiology, Intercollegiate Athletics 125, 128, 133, 171, 201, 202, 204, 206, 209, 210, 211, 212, 213, 216, 217, 218, 219, 220, 221, 223, 227, 235, 240, 261, 262, 270, 271, 281, 291, 293

F. Ethnic Studies

(Minimum 3 semester/4 quarter units)
 Note: All courses below must have been completed Fall 2021 or later in order to fulfill Area F.

Asian American Studies 150*
 Black Studies 150*
 Chicano Studies 150*
 Ethnic Studies 102 or 102H, 150* or 150H

* Numbered 101 prior to Fall 2022

Intersegmental General Education Transfer Curriculum (IGETC) Plan C: 2022-2023

PLAN C: 2022-2023

Completion of all the requirements in the Intersegmental General Education Transfer Curriculum (IGETC) will permit a student to transfer from Santa Ana College to a campus in either the CALIFORNIA STATE UNIVERSITY or the UNIVERSITY OF CALIFORNIA system without the need, after transfer, to take additional lower-division, general education courses to satisfy campus general education requirements.

1. It is generally recommended that students complete all the listed requirements for IGETC prior to transferring. Students may obtain partial certification, however, by completing all but 1-2 courses. Consult a counselor for additional information.
2. **Complete all courses used for IGETC certification with a minimum grade of C (C minus is not acceptable.)**A "pass" is acceptable providing it is equivalent to a grade of C or higher. The catalog must reflect this policy.
3. Request certification from the last California community college attended prior to transfer to CSU or UC. Requests should be made to the Office of Admissions and Records during the semester prior to the last term of attendance. Please consult the class schedule or a counselor for deadline information.
4. Prior to requesting certification, have all official transcripts on file from every high school and college attended.
5. Courses taken at other California community colleges will be applied to the subject areas in which they are listed by the institution where the work was completed.
6. Courses taken at other regionally accredited private/out of state institutions (which do not maintain an IGETC certification list) will be placed in the subject areas for which Santa Ana College has equivalent courses. Equivalency is determined by Santa Ana College faculty. Petitions are available from the Counseling Division and must be accompanied by the appropriate documentation. In some cases non-equivalent courses may also be considered. Consult a counselor for additional information.
7. Courses completed at foreign institutions (without US regional accreditation) are not acceptable except for certification of competence in a language other than English.
8. Students earning an AS-T in Biology or Chemistry must complete IGETC for STEM. See "Associate Degrees for Transfer" on page 20 for additional information.

IMPORTANT NOTE: The list of certifiable courses will be subject to change year by year, but students are assured that courses taken to meet IGETC requirements will be honored **if they are approved for the academic year in which they are taken. Courses on this list are approved beginning Fall 2022 and are valid through Summer 2023.**

TRANSFER CREDIT

Students may transfer up to 70 semester units to the UC or CSU system. Sixty transferable units are needed for junior standing. All courses used for CSU transfer credit must be numbered 100 or above in the Santa Ana College catalog. All courses used for UC transfer credit can be found on page 41.

AREA 1 - ENGLISH COMMUNICATION

C.S.U.: 3 courses required, one from each group.

U.C.: 2 courses required, one each from Group A and B.

Group A: English Composition

1 course, minimum 3 semester/4-5 quarter units.
English 101** or 101H**

Group B: Critical Thinking-English Composition

1 course, 3 semester/4-5 quarter units.
English 102** or 102H** (102 and 102H not accepted in 1B if completed prior to Fall 2011)
English 103** or 103H** Philosophy 110** or 110H**

Group C: Oral Communication (CSU ONLY)

1 course, 3 semester/4-5 quarter units.
Communication Studies 102** or 102H**, 103** or 103H**, 140, 145

AREA 2A - MATHEMATICAL CONCEPTS AND QUANTITATIVE REASONING

1 course, 3 semester/4-5 quarter units.

Math 105, 140**, 140S**, 145, 150**, 170**, 180**, 185, 219**, 219S**, 221**, 280, 287; Psychology 210

AREA 3 - ARTS AND HUMANITIES

3 courses, 9 semester/12-15 quarter units, with at least one course from Group A and one course from Group B.

Group A: Arts (minimum 1 course)

Art 100** or 100H**, 101, 102, 103, 104, 105, 106, 108
Communications & Media Studies 103
Dance 100** or 100H**, 101 (Fall 2022 or later completion), 102, 104, 105
Digital Media 102 (Fall 2022 or later completion), 103, 104, 107
Interdisciplinary Studies 121
Music 101** or 101H**, 102** or 102H**, 103, 104, 105, 111
Photography 150
Theatre Arts 100, 105, 120, 123 (Fall 2020 or later completion)

Group B: Humanities (minimum 1 course)

American Sign Language 111, 116, 210
Chinese 102
Digital Media 105
English 102** or 102H**, 220, 231, 232, 233A or 233B or 233C, 241, 242, 243, 245, 246, 270 (Fall 2020 or later completion), 271, 272, 278
French 102, 201** or 201H**, 202** or 202H**
History 101** or 101H**, 102** or 102H**, 150, 151, 153, 163*
Interdisciplinary Studies 200
Italian 121
Japanese 102
Philosophy 106** or 106H**, 108, 112, 118
Spanish 102** or 102H**, 195A, 195B, 201** or 201H**, 202** or 202H**
Vietnamese 102

AREA 4 - SOCIAL AND BEHAVIORAL SCIENCES

3 courses, 9 semester/12-15 quarter units from at least 2 disciplines or an interdisciplinary sequence.

Anthropology 100** or 100H**, 103, 104** or 104H**, 105, 125
Asian American Studies 150
Biology 200
Black Studies 150
Chicano Studies 150
Child Development 107**
Communication Studies 206** or 206H**
Communications & Media Studies 105, 111
Criminal Justice 101 or 101H
Economics 120, 121 English 104** or 104H**
Environmental Studies 200
Ethnic Studies 102** or 102H**, 150** or 150H**,
Geography 100** or 100H**, 102**, 140
History 101**, 101H**, 102**, 102H** (101, 101H, 102, 102H Fall 2013 or later completion), 105, 118, 120**
or 120H**, 121** or 121H**, 123, 124** or 124H**, 125, 127, 133, 146, 163*, 181
Interdisciplinary Studies 117H, 155
Law 100 (Fall 2020 or later completion)
Paralegal 100 (Fall 2021 or later completion)
Political Science 101** or 101H**, 200** or 200H**, 201, 220, 235
Psychology 100** or 100H**, 140, 157**, 160, 170, 200, 219, 230, 240, 250
Sociology 100** or 100H**, 140** or 140H**, 240
Women's Studies 101, 102

AREA 5 - PHYSICAL AND BIOLOGICAL SCIENCES

At least 2 courses, 7-9 semester/9-12 quarter units with one Physical

Science course and one Biological Science course; at least one must include a corresponding laboratory (Group C).

Group A: Physical Science (1 course)

Astronomy 109, 110
Chemistry 109**, 115, 119**, 209**, 210, 219** or 219H**, 229
Earth Science 110** or 110H**, 115**, 150** or 150H**
Environmental Studies 140
Geography 101**, 130
Geology 101**, 140, 150** or 150H**, 201
Physical Science 115, 117**
Physics 109**, 210**, 211**, 217**, 227**, 237**, 279**, 289**

Group B: Biological Science (1 course)

Anthropology 101
Biology 109** or 109H**, 111, 115, 139**, 149
(Fall 2017 or later completion), 177, 190, 211**, 212, 214, 229**, 239,
249, 259
Environmental Studies 259
Psychology 200 (Fall 2017 or later completion)

Group C: Laboratory Activity

Anthropology 101L
Astronomy 140
Biology 109L, 111, 115, 139**, 149 (Fall 2017 or later completion), 190L,
211**, 212, 214, 229**, 239, 249, 259
Chemistry 109**, 115, 119**, 209**, 210, 219** or 219H**, 229
Earth Science 115**
Environmental Studies 259
Geography 101L
Geology 101L, 201
Physical Science 115, 118**
Physics 109**, 210**, 211**, 217**, 227**, 237**, 279**, 289**

AREA 6A - LANGUAGE OTHER THAN ENGLISH (U.C. ONLY)

Satisfactory completion of two years of high school coursework in one language other than English with grades of "C" or better***.

OR

Completion of one of the following: American Sign Language 110, 111, 112; Chinese 101; French 101, 102, 201, 201H, 202, 202H; Italian 120; Japanese 101, 102; Spanish 101, 101H, 102, 102H, 201, 201H, 202, 202H; Vietnamese 101, 102.

OR

Satisfactory completion, with "C" grades or better, of two years of formal schooling at the sixth-grade level or higher in an institution where the language of instruction is not English;

OR

Satisfactory score in examinations of languages other than English as follows:

3 or higher on College Board Advanced Placement Examination, 5 or higher on International Baccalaureate Higher Level Examination; SAT II: Subject Tests (see counselor for required scores); A, B, or C on "0" Level exam; 5, 6, 7 or A, B, or C on "A" Level exam.

OR

Satisfactory completion of an achievement test administered by a college in language other than English equivalent to two years of high school language. If an achievement test is not available, a SAC faculty member may verify competency.

AMERICAN INSTITUTIONS REQUIREMENT

(Not part of IGETC. May be completed prior to transfer.)

CSU has an American Institutions graduation requirement that is separate from IGETC. Courses used to meet the CSU requirement can usually also be used in Area 3 or 4. (This is at the discretion of each CSU campus.) To meet the CSU requirement, students should take Political Science 101** or 101H** AND one of the following courses: History 118, 120**, 120H**, 121**, 121H**, 123, 124**, 124H**, 127, 146.

UC requires the completion of a college course or courses with a grade of "C" or better OR a one-year course in high school in U. S . History or a half-year course in U. S . History and a half-year course in American Government with grades of "C" or better (UCLA requires grades of "B"). UCSB requires the completion of a college course. If you are using college coursework to satisfy this requirement, check the appropriate UC catalog to determine which course(s) to take.

* Courses designated with an asterisk may be counted in one area only.

** Indicates that transfer credit may be limited by either UC or CSU or both. Please See page 42 for additional information.

*** High School transcript must be on file in the admissions office. Please consult with a counselor for additional information.

Update(s) to Courses

Fire Officer Training

FOT 138

Fire Inspector 2C: Inspecting Fire & Life Safety Systems and Equip.

Unit(s): 1.0 Class Hours: 22.5 Lecture, 1.5 Lab total.

Prerequisite: Completion with a grade of "C" or better or a Passing grade in: FOT 136;

This course provides students with a basic knowledge of inspection requirements related to the roles and responsibilities of a Fire Inspector II including inspection of life safety systems and building services equipment, fire protection systems, and emergency access criteria. Materials fees required for State Fire Training (CFSTES) Certificate of Completion. Not offered every semester.

CSU

Update(s) to Programs

Business Administration

Business Administration 2.0 ADT

Program Code: SAC.BUS2.AST
Program Control Number: 41816

The Associate in Science in Business Administration for Transfer (AS-T) prepares students to move into a curriculum at a four-year institution leading to a baccalaureate degree in Business Administration. Please consult a counselor regarding specific course requirements for your transfer institution. Completion of the AS-T degree also provides guaranteed admission with junior status to the CSU system, although does not guarantee admission to a specific campus or major. **See Associate Degrees for Transfer for a list of additional requirements for all Associate in Arts for Transfer (AA-T) and Associate in Science for Transfer (AS-T) degrees.**

Upon completion of the AS-T degree in Business Administration, students will have a general understanding of business fundamentals, including the areas of accounting, economics, and computer information systems. In addition, they will have an understanding of the legal environment of business, and will have a sufficient understanding of mathematical concepts to enable them to successfully pursue a business degree at a four-year institution.

The AS-T degree in Business Administration is appropriate for students whose vocational plans include careers in business fields such as accounting, computer information systems, finance, management, marketing, or other business fields.

NOTE: This degree was revised effective Fall 2022. Students who begin this program at SAC prior to Fall 2022 may have catalog rights to the previous version. Please see a counselor for additional information.

Learning Outcome(s):

1. communicate business and financial information in a clear, concise, and well organized manner.
2. apply financial, accounting, and business knowledge to collaborate with others toward a common goal.
3. integrate core concepts and theories across functional areas of business.

Required Core:

Units: 28-29.5

ACCT 101	Financial Accounting	4
ACCT 102	Managerial Accounting	4
ECON 120	Principles/Macro	3
ECON 121	Principles/Micro	3
BUS 101	Business Law	3
OR		
BUS 105	Legal Environment of Business	3
OR		
LAW 105	The Legal Environment of Business	3
MATH 219	Statistics and Probability	4
OR		
MATH 219H	Honors Statistics and Probability	4
OR		
MATH 219S	Statistics and Probability with Support	4.5
OR		
PSYC 210	Statistics for the Behavioral Sciences	4
MATH 145	Finite Mathematics	4
OR		
MATH 150	Calculus for Biological, Management and Social Sciences	5
BUS 100	Fundamentals of Business	3
OR		
BUS 222	Business Writing	3

Total: 28-29.5