



***Santa Ana College  
Facilities and Safety Committee Meeting  
November 15, 2022***





## PROJECTS

- ▶ Dunlap Hall Renovation - Completed
- ▶ Central Plant & Infrastructure - Completed
- ▶ Johnson Student Center & Demolition - Completed
- ▶ Science Center & Building J Demolition - Completed



# PROJECT UPDATE SANTA ANA COLLEGE SCIENCE CENTER & BUILDING J DEMOLITION

## Project Summary:

- ▶ Construction of a new three-story, 64,785 square foot science center and 880 square foot greenhouse
- ▶ Programs Include: Division Office, Faculty Offices, (2) Standard Classrooms, (1) Large Classroom, (1) Large Divisible Classroom, (1) Engineering Lab & Support Space, (6) Biology Labs & Support Space, (2) Geology Labs & Support Space, (5) Chemistry Labs & Support Space, (1) Physics Lab & Support Space, Student Collaboration Areas
- ▶ Project includes demolition of (3) J Buildings

## Current Status:

- ★ ▶ Addressing warranty work on exterior plaster, fume hoods and greenhouse

## Budget:

- ▶ \$61.88 million
- ★ ▶ Note: In close-out phase and final expenditures pending





# CURRENT CAPITAL PROJECTS

## RUSSELL HALL REPLACEMENT (HEALTH SCIENCES BUILDING)

### Project Summary:

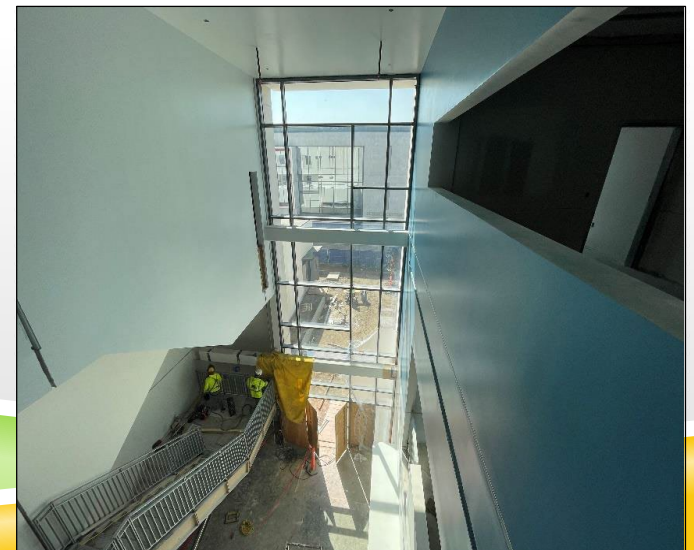
- ▶ Construction of a new 55,563 square foot Health Sciences Building to include Nursing, Occupational Therapy Assistant, Emergency Medical Technician, Pharmacy Technology, and 20 general classrooms and computer labs. The new building will be located south of the existing library and north of the new Science Center
- ▶ Demolition of existing Russell Hall Building

### Current and Upcoming Activities:

- ▶ The entire building is almost completed with window/glazing installation. [Window testing underway.](#)
- ▶ Interior construction work continues.
- ★ ▶ [New: Under review. Target occupancy Summer 2023 for Fall semester classes](#)
- ★ ▶ [New: Under Review. Decommissioning of Russell Hall complete Summer 2023. Demolition of Russell Hall start Fall 2023. All phases of the project must be completed by Winter 2023/Spring 2024 to meet the State construction deadline \(subject to change\)](#)

### Budget:

- ▶ \$58.8 million (budget under review)
- ▶ \$20,475,000 state funded (2020 estimated contribution)

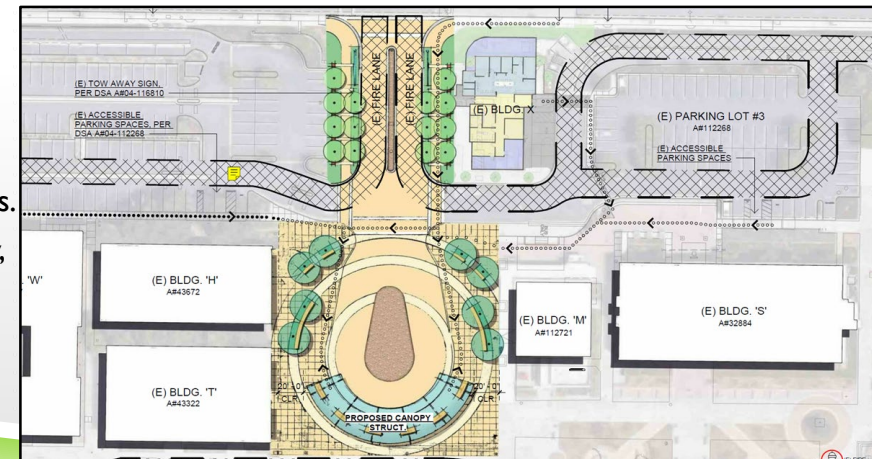
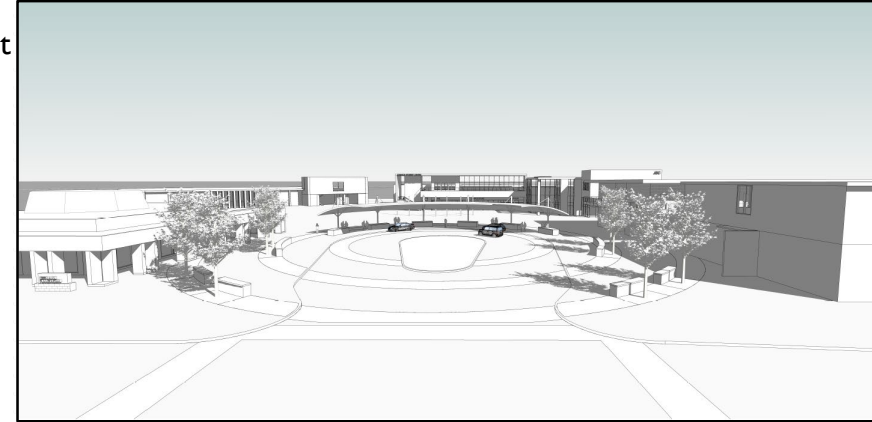


# CURRENT CAPITAL PROJECTS

## CAMPUS ENTRANCE IMPROVEMENTS

### Project Summary:

- ▶ The Campus Entrance Improvement project is scheduled to start upon completion of the Russell Hall Demolition project around Winter 2023. The project objectives include traffic congestion reduction, improve pedestrian and vehicle circulation, remove accessibility barriers, increase bus/ride-share drop-offs, and improve the campus front entry.
- ▶ In an effort to minimize college impacts and provide flexible construction budget options, the project will be phased into three (3) phases.
- ▶ Phase 1 will consist of front entry renovations, softscape and hardscape improvements, the introduction of a new “hairpin” vehicular turn, shade structure and front entry plaza improvements.
- ▶ Phase 2 will consist of Parking Lot # 1 renovations with hardscape and softscape improvements and increased parking stalls counts.
- ▶ Phase 3 will consist of Parking Lot # 3 and # 4 renovations with hardscape and softscape improvements, increased parking stall counts, increased drop-off areas, and dedicated ride-sharing areas.
- ▶ All phases will improve traffic and pedestrian circulation & safety, and remove accessibility barriers.



### Current Status:

- ▶ 60% construction document phase
- ▶ Coordinating construction phasing/logistics

### Budget:

- ▶ \$5.3 million for Phase I only



**SANTA ANA**  
**COLLEGE**

## CURRENT CAPITAL PROJECTS

PROJECT	STATUS	ESTIMATED BUDGET
★ Barrier Removal Signage/Wayfinding (Exterior)	The award of bid was approved by the Board of Trustees on September 12, 2022. <a href="#">Construction began on October 17, 2022.</a>	\$355,863



**SANTA ANA**  
COLLEGE

## CURRENT CAPITAL PROJECTS SECONDARY PROJECTS

PROJECT	STATUS	ESTIMATED BUDGET
Johnson Student Center Mailroom Dutch Door	The project is currently undergoing punch-list work.	\$12,200
Johnson Student Center Mailroom Mail Slots	The project is currently in the procurement phase.	\$89,000
Science Center Greenhouse Gates	The project is currently undergoing punch-list work.	\$33,100



## CURRENT CAPITAL PROJECTS SECONDARY RELOCATIONS, RECONFIGURATIONS & RESTORATION

PROJECT	STATUS	ESTIMATED BUDGET
MCHS Phase I Exterior Painting and Renovation	Middle College High School (MCHS) moved back to the two-story building. Exterior painting and reconfiguration of B33 for offices was completed. This project has been completed and is in the close-out phase.	\$170,120 (shared costs by College and SAUSD)
Human Services Division & Fire Tech Relocation	Relocation of Human Services Division into A113 and Fire Tech Department into B10 and VL203. Minor reconfiguration. This project is in the close-out phase.	\$41,000





**SANTA ANA**  
COLLEGE

## CURRENT CAPITAL PROJECTS SECONDARY RELOCATIONS, RECONFIGURATIONS & RESTORATION

PROJECT	STATUS	ESTIMATED BUDGET
Temporary Village (TV) Phase 5A Fashion & Others	Reconfiguration of the Village Portables includes: Fashion Lab Renovation, Thrive Center Renovation, and Media Lab Renovation. Relocation of CEC Testing Center, CNA Home Health Care Lab, CEC offices, CEWD, Outreach, Temporary Thrive Center, Undocu-Scholars Program, Asian American Resource Program, and Umoja Program. This project is in the construction document phase.	\$431,000
TV Phase 5B 300 Removal & Lot 11	Removal of VL300 portable and restoration of Parking Lot 11 with installation of five electrical vehicle charging stations. <a href="#">The Notice of Completion was approved by the Board of Trustees on October 11, 2022. This project has been completed and is in the close-out phase and will be removed from future updates.</a>	\$180,000
TV Phase 5C Demolition of B4-B8	Demolition of B4-B8 portables and site improvements after programs are relocated into the new Health Sciences Building. <a href="#">This project will be cancelled due to MCHS expanded use of B portables.</a>	\$190,000
Building S – Safety Key Room	Reconfiguration of mail room for expansion of key inventory and access control system space needs for Campus Safety and Maintenance & Operations. 100% construction document phase completed and under review.	\$120,000



**SANTA ANA**  
COLLEGE

## CURRENT CAPITAL PROJECTS PLANNING ACTIVITIES

PROJECT	STATUS	ESTIMATED BUDGET
Centennial Education Center Redevelopment	The internal Work Group met and has provided feedback to the architect on the various site redevelopment design options. Upcoming meetings are planned with the City of Santa Ana Work Group to discuss partnership with future improvements and operations. The internal work group will convene after further discussions with the city.	\$209,690 (Study Only)  \$1 million Improvement Contribution





**SANTA ANA**  
COLLEGE

## CURRENT CAPITAL PROJECTS PLANNING ACTIVITIES

PROJECT	STATUS	ESTIMATED BUDGET
Bristol & 17th Street Property, Site Master Planning Study	The first phase of the planning and development assessment has been completed that included studying affordable student housing. It was determined affordable student housing was not ideal at this location and a future district-wide feasibility study will begin in this upcoming academic year as a part of SBI 69 grant funding. The second phase has commenced and will assess the feasibility of a hospitality/culinary/tourism program.	\$288,000 (Study Only)





**SANTA ANA**  
**COLLEGE**

# 2022-2023 SCHEDULED MAINTENANCE (SM23) PROJECTS

## **Santa Ana College**

State Allocation 2023	\$9,862,875
-----------------------	-------------



# 2021-2022 SCHEDULED MAINTENANCE (SM22) PROJECTS

## **Santa Ana College**

State Allocation 2022	\$7,284,610
-----------------------	-------------





**SANTA ANA**  
COLLEGE

2021-2022

## SCHEDULED MAINTENANCE PROJECTS (SM22)

PROJECT	STATUS	ESTIMATED BUDGET
Buildings G, H, & W HVAC Replacement	The agreement for architectural services was approved by the Board of Trustees on May 16, 2022. The project kick-off meeting occurred on June 4, 2022. <a href="#">The site assessment was completed. The architect and the District are reassessing the scope to meet the target budget.</a>	\$2,435,500
Buildings F, I, & J Roof Replacement	<a href="#">The contract start date was September 12, 2022. Building F is 95% complete, Building I is 80% complete. During a site conditions assessment of Building J the project team discovered damaged ceiling joists. The District's structural engineer provided a remediation repair plan and the contractor will replace the joists before starting roofing work in mid-November 2022. The project is delayed.</a>	\$1,948,787
Barrier Removal Campus-wide	Various barrier removal projects. The District is working through scope development and the projects are currently in the planning phase.	\$200,000
Buildings L, T, & X HVAC & Roof Replacements	The agreement for architectural services was approved by the Board of Trustees on May 16, 2022. The project kick-off meeting occurred on June 4, 2022. <a href="#">The site assessment was completed. The architect and the District are reassessing the scope to meet the target budget.</a>	\$2,700,323



# 2019-2020 SCHEDULED MAINTENANCE (SM20) PROJECTS

## **Santa Ana College**

State Allocation 2020                      \$229,136

- ▶ Water Conservation Irrigation Controller Upgrade Phase 2
- ▶ Campus-wide Drinking Fountains



## SCHEDULED MAINTENANCE PROJECTS (SM20)

PROJECT	STATUS	ESTIMATED BUDGET
Water Conservation Irrigation Controller Upgrade Phase 2	This project is in the close-out phase.	\$150,000
Campus-wide Drinking Fountains	This project includes removing and replacing existing non-compliant drinking fountains at Santa Ana College with compliant drinking fountains and bottle fillers. <a href="#">In the bidding phase.</a>	\$160,000





## 2018-2019 COMPLETED SM19 PROJECTS

PROJECT	STATUS	EXPENDED AMOUNT
★ BR Library Restroom Upgrade (SM 18-19)	This project has been completed. The District has discovered a defect with the sewer installation after completion of the project and has defaulted the contractor. The District is working with the bonding company and legal counsel. The repair work is delayed.	\$445,302  * \$13,823 funded from Capital Outlay due to budget short fall.

# CURRENT TEST PILOTS ACCESS CONTROL & KEY PROJECTS DISTRICT-WIDE

PROJECT	STATUS	ESTIMATED BUDGET
SAC Bldg D	Building D 100% construction documents have been completed and plans are being prepared to submit to DSA in November 2022.	\$1,626,855
SAC CEC (mechanical re-key only)	The rekey to Medeco cylinders is completed. The project is in the close-out phase. The test pilot of the key inventory and distribution software continues.	\$96,000
SCC Bldgs D & H	The design has been completed and submitted to DSA back in June 2022. The architect is addressing DSA back check comments.	\$3,225,787
DO	Schematic design has been completed. The design team has proceeded with the Design Development phase and will submit for District's review November 2022.	TBD

- The Work Group met in September 2022 to discuss several operational and project issues regarding on-going test pilots and review of the AR 350I. Revisions to the AR 350I are under review.





## DISTRICT-WIDE PLANNING

### ★ **Student Housing Feasibility Study (SB 169 Grant Funding)**

- ▶ The agreement for consulting services for a District-wide Student Housing Feasibility Study was approved by the Board of Trustees on October 24, 2022 in anticipation of State Chancellor's Office allocation.
- ▶ Kick-off work in November and a survey will be forthcoming.

### ★ **Sustainable Master Plan Update**

- ▶ Staff is reviewing the 2015 Sustainability Master Plan goals and objectives to prepare for an update to the plan.
- ▶ Due to evolving State goals and priorities the District is reviewing the feasibility and impact of alignment with the State's plan.
- ▶ This information will assist the Sustainable RSCCD Committee and work group.

## QUESTIONS