

ACADEMIC SENATE  
SANTA ANA COLLEGE

1530 WEST 17<sup>TH</sup> STREET  
SANTA ANA, CA 92706  
(714) 564-6831  
FAX: (714) 564-6999

**Resolution:** F97.01  
Senate Structure

**Passed:** November 18, 1997

**Date:** November 4, 1997  
**Subject:** Senate Structure  
**Mover:** Bonita Jaros  
**Seconder:** Richard Keller

**Whereas,** Rancho Santiago Community College District (RSCCD) has become a two-college District;

**Whereas,** the faculty of RSCCD are desirous of local autonomy while maintaining a single, unified voice at the District level;

**Whereas,** the State Academic Senate will recognize for voting purposes each Senate in a multi-college District that has a separate constitution;

**Whereas,** the faculty of RSCCD are desirous of maximizing its voice in statewide issues;

**Whereas,** the creating of separate constitutions will allow for the uniqueness of the structure of each Senate, while allowing the faculty at each college to determine the evolution of their Senate;

**Whereas,** initially the faculty at Santa Ana College will have a representative Senate and the faculty at Santiago Canyon College will be a Senate of the whole.

**Be it resolved as follows:** That the Executive Board of the RSCCD will prepare for approval of the RSCCD faculty, Constitutions and Bylaws for three Senates.

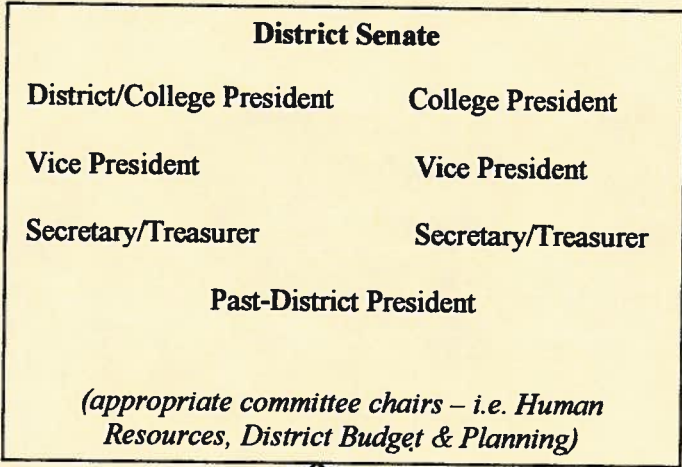
# ACADEMIC SENATE SANTA ANA COLLEGE

**Resolution: F97.01**  
**Senate Structure**

Page 2

Passed: November 18, 1997

**Be it further resolved as follows:** The Constitutions shall reflect the following structure:

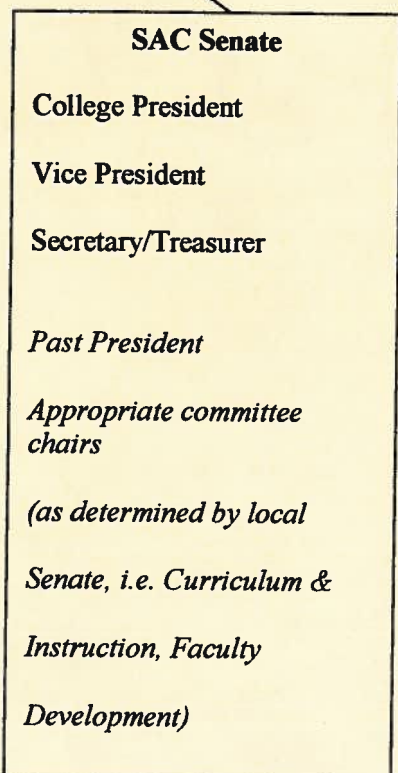
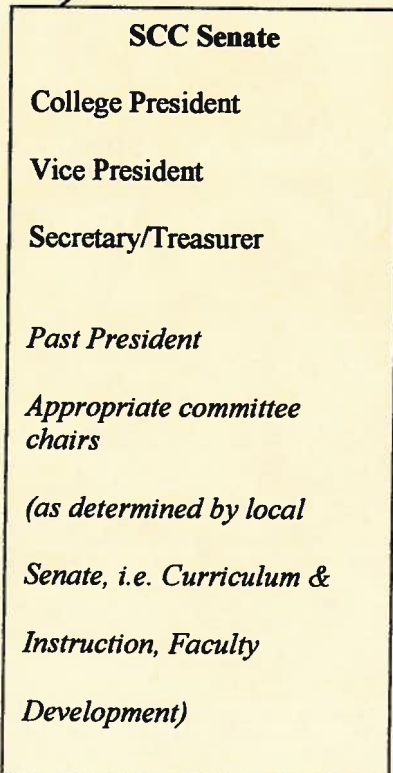


**District President:**

- Duties:**
- Board of Trustees
  - faculty spokesperson – District Shared Governance
  - Budget & Planning
  - District Human Resources
  - District Executive Board
  - President's Committee

**Terms of Office:** Two years

- Year 1: College President
- Year 2: District and College President
- Re-election option (to be determined in ByLaws)
- Alternates annually between college Presidents



**Local President**

- Duties:**
- conduct local Senate meetings
  - attend President's Council
  - attend Board of Trustees meetings
  - chair/appoint C&I Council Chair
  - faculty spokesperson in College Shared Governance