



**SANTA ANA COLLEGE**



**Santiago Canyon College**



## **HOW TO: ACCESS AN ADOBE CREATIVE CLOUD FILE FROM A STUDENT STATION USING A GENERIC USER ID**

---

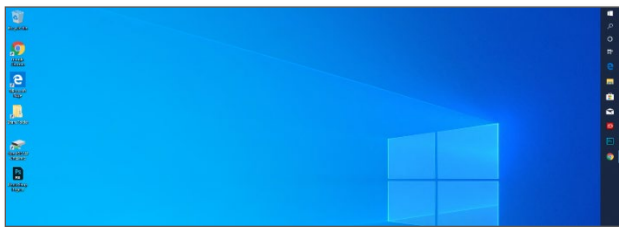
### **How to Access an Adobe Creative Cloud File from a Student Station Using a Generic User Id**

A “Generic Student Computer”: You did not need to login before using the computer, or were provided a generic user id to login to start using it. Then you will need to login using your email at the Adobe prompt and or WebAdvisor id and password at a Windows prompt to fully authenticate to the Adobe cloud.

#### **DIRECTIONS:**

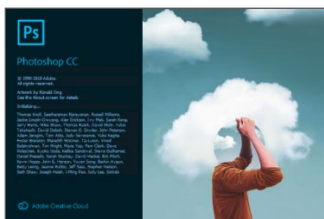
##### **Step 1:**

Locate an Adobe Creative Cloud file on the computer.



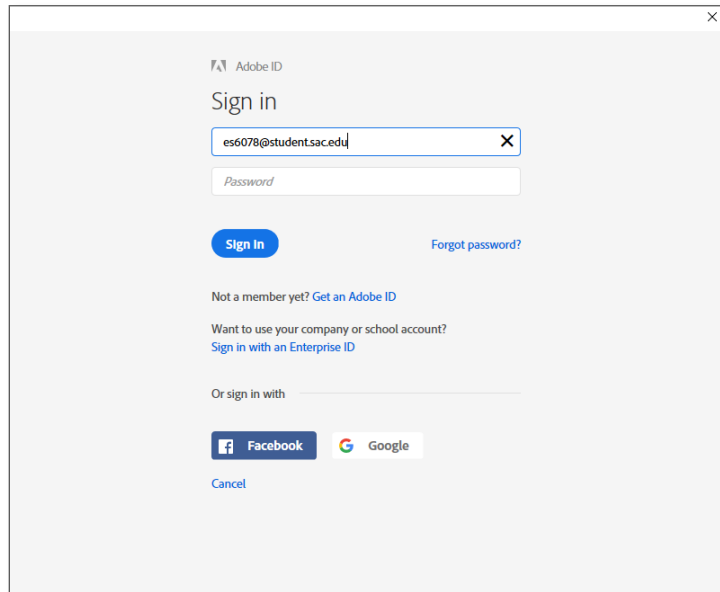
##### **Step 2:**

Wait for the file to load.



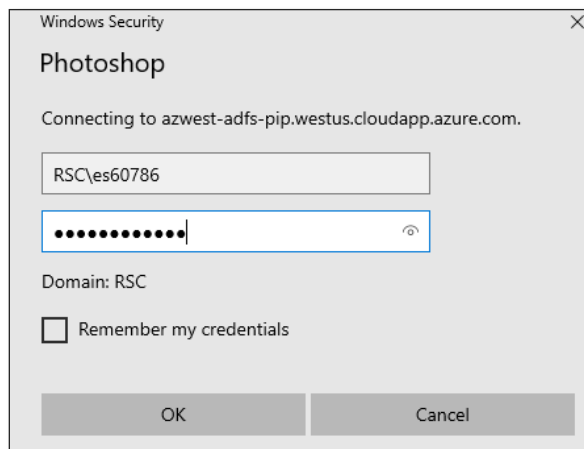
### Step 3:

Sign in to the Adobe Sign in screen. Sign in using your student e-mail address. Your student e-mail address is your WebAdvisorID@Student.SAC.edu or WebAdvisorID@Student.Scollege.edu. You do not need to enter your password on this screen,



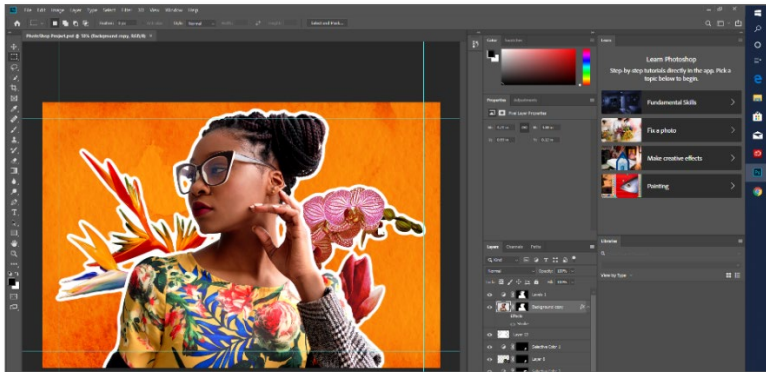
### Step 4:

You will now be prompted with a Windows Security sign in. Sign in using your WebAdvisor ID with RSC\ before your WebAdvisor ID, and your default password.



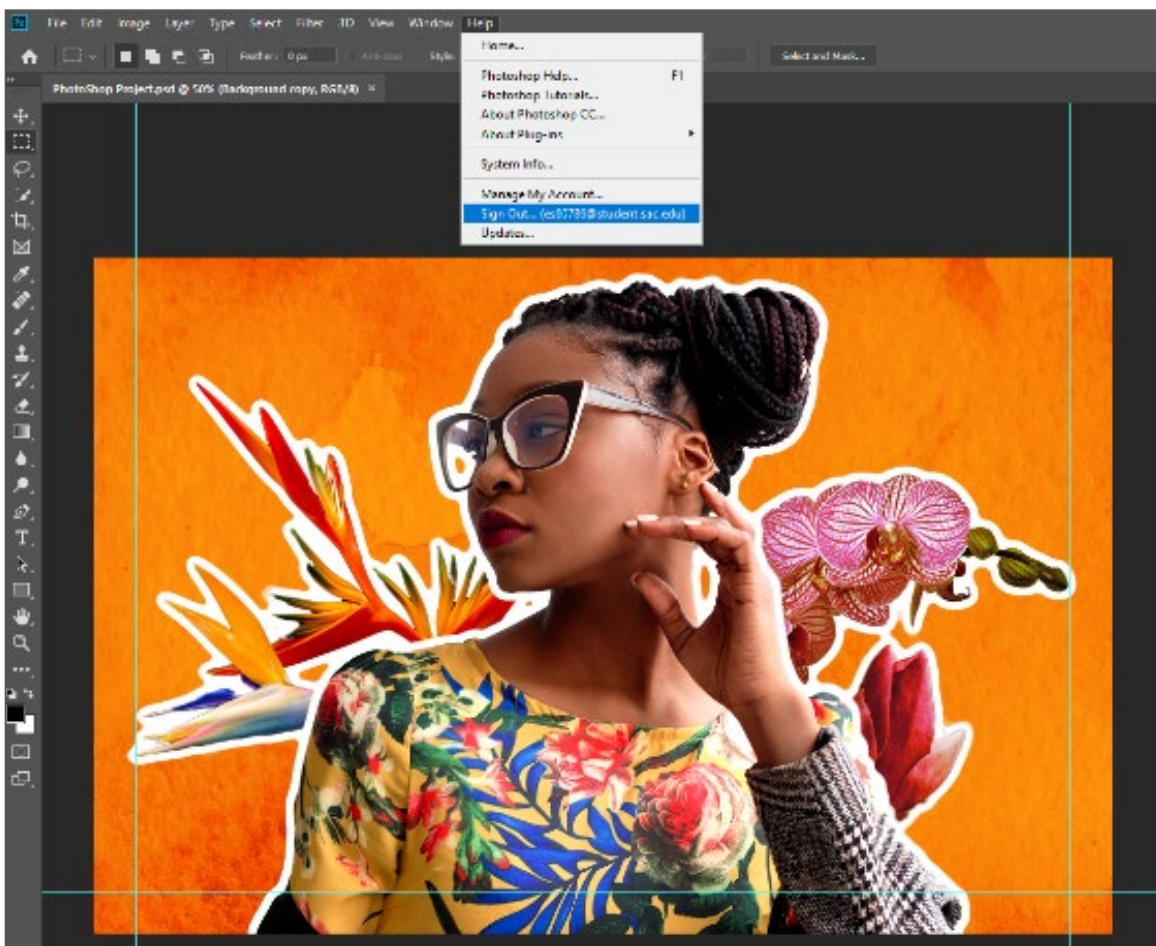
### Step 5:

Your file is now ready to be used.



### Step 6:

When ready to sign out, access the Help menu and click sign out.



**Step 7:**

You will be prompted to sign out from every Adobe application. Please verify you have saved your work before clicking sign out.

