



**SANTA ANA COLLEGE  
FACILITIES COMMITTEE MEETING  
MAY 21, 2019**



**SANTA ANA  
COLLEGE**



## PROJECTS

- ▶ Dunlap Hall Renovation - Completed
- ▶ Central Plant & Infrastructure - Completed
- ▶ Johnson Student Center & Demolition
- ▶ Science Center & Building J Demolition



# PROJECT UPDATE SANTA ANA COLLEGE SCIENCE CENTER & BUILDING J DEMOLITION

## Project Summary:

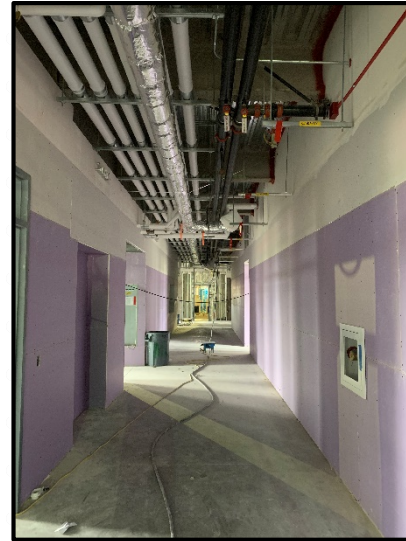
- ▶ Construction of a new three-story, 64,785 square foot science center and 880 square foot greenhouse
- ▶ Programs Include: Division Office, Faculty Offices, (2) Standard Classrooms, (1) Large Classroom, (1) Large Divisible Classroom, (1) Computer Lab, (1) Engineering Lab & Support Space, (6) Biology Labs & Support Space, (2) Geology Labs & Support Space, (5) Chemistry Labs & Support Space, (1) Physics Lab & Support Space, Student Collaboration Areas
- ▶ Project includes demolition of (3) J Buildings

## Current Status:

- ▶ New Structural steel activities, welding of stairs, exterior scaffolding/framing, and sheathing of parapets completed
- ▶ New Interior production drywall has commenced
- ▶ New Exterior sheathing, moisture barrier, and window flashing on-going
- ▶ New Interior metal framing on-going on upper floors and mechanical shaft areas
- ▶ Target occupancy Summer 2020

## Budget:

- ▶ \$70.48 million







# PROJECT UPDATE SANTA ANA COLLEGE JOHNSON STUDENT CENTER

## Project Summary:

- ▶ Demolition of existing building.
- ▶ Construction of a 63,642 square foot new Johnson Student Center
- ▶ Building Programs Include: Campus Store, Grab-n-Go/Coffee & Juice, DSPS, EOPS/CARE & CalWORKS, Student Financial Services, SSSP/Upward Bound, Warehouse, Reprographics, Conference Center, Financial Aid, Student Placement, Health & Wellness Center, DSPS, Office of Student Life, ASG, The Spot
- ▶ Site improvements include new hardscape, landscape and shade shelter around the Johnson Center as well as renovations to the “West Plaza” including new landscape, hardscape, a shade structure, and a lunch serving kiosk for Middle College High School (MCHS)

## Current Status:

- ▶ New Building pad certification
- ▶ New Excavate building foundations
- ▶ New Excavate trenches for new underground site utilities
- ▶ Target occupancy Spring 2021

## Budget:

- ▶ \$60 million
- ▶ \$58 million funded by Measure Q
- ▶ Note: The budget is currently deficient by \$2 million and a new budget update is pending upon a reallocation of budgets from the Central Plant project





# SCHEDULED MAINTENANCE PROJECTS SANTA ANA COLLEGE

PROJECT	STATUS	ESTIMATED BUDGET
Window Replacement (H) (SM 16-17)	A deductive change order and Notice of Completion were approved by the Board of Trustees on April 29, 2019. This project has been completed and will be removed from future updates.	\$731,535*  * Budget Breakdown: <ul style="list-style-type: none"><li>• \$440,000 funded by SM17</li><li>• \$260,000 funded by the Campus</li><li>• \$31,535 funded by Capital Facilities Fund</li></ul>
BR Library Restroom Upgrade (SM 18-19)	The agreement for architectural services was approved by the Board of Trustees on May 13, 2019.	\$431,479

# CURRENT CAPITAL PROJECTS

## RUSSELL HALL REPLACEMENT (HEALTH SCIENCES BUILDING)

### Project Summary:

- ▶ Construction of a new 55,563 square foot Health Sciences Building to include Nursing, Occupational Therapy Technology, Emergency Medical Services, Pharmacy Technology, general classrooms and computer labs. The new building will be located south of the existing library and north of the new Science Center
- ▶ Demolition of existing Russell Hall Building
- ▶ The District will have to adhere to a strict state process and guidelines

### Current Status:

- ▶ New DSA submittal occurred on March 11, 2019
- ▶ DSA approval anticipated Winter 2019
- ▶ Target construction start Spring 2020
- ▶ Target occupancy Summer/Fall 2022
- ▶ Demolition anticipated to start Summer/Fall 2022

### Budget:

- ▶ \$58.8 million
- ▶ \$20,475,000 state funded (estimated contribution)
- ▶ Budget under review





# RUSSELL HALL REPLACEMENT SECONDARY EFFECTS AND RELOCATIONS SANTA ANA COLLEGE

PROJECT	STATUS	ESTIMATED BUDGET
Campus Entrance Improvements	This project is in the initial start-up of planning. The on-call estimator has created a new target cost budget as a result of needed site restoration once Russell Hall is demolished. The anticipated construction cost is estimated to be \$6-\$8 million and a total project budget in the range of \$10-\$12 million depending on whether or not we have to repair or reconstruct the front entrance of 17th Street. Currently, the District is working on the traffic engineering consultant services agreement.	TBD (Under Review)
Secondary Effect Relocations	User group meetings with college staff to discuss various relocations as a result of the demolition of Russell Hall occurred on January 15 and 16, 2019 and are on-going. The last meeting occurred on March 12, 2019.	TBD (Under Review)

# CURRENT CAPITAL PROJECTS

## SANTA ANA COLLEGE

PROJECT	STATUS	ESTIMATED BUDGET
Campus Directory (Electronic)	A meeting for the campus and the District to review final drawings before submitting to DSA occurred on March 28, 2019. The architect will make more changes to the drawings before submitting to DSA as a result of the meeting. Another site visit will take place with Campus Safety and staff to verify locations of the new electronic directories. The District is coordinating with the architect to install one directory at each campus to use as a test pilot.	\$272,613
Barrier Removal Signage/Wayfinding	A meeting for the campus and the District to review final drawings before submitting to DSA occurred on March 28, 2019. The architect will make more changes to the drawings before submitting to DSA as a result of the meeting. A test mock-up of large lettering was installed on Dunlap Hall. This is to assist in determining the final color and/or colors for the aluminum lettering to be utilized on all buildings to create a standard for the college.	\$345,025





## CURRENT CAPITAL PROJECTS SANTA ANA COLLEGE

PROJECT	STATUS	ESTIMATED BUDGET
ITS Copper Wire	With the completion of the Central Plant project, new twisted pair copper wire lines were installed to replace the old lines as part of the infrastructure improvements across campus. These copper lines were replaced and then terminated (landed) at 22 buildings on campus at their respective Intermediate Distribution Frame (IDF) rooms or the Building Distribution Frame (BDF) rooms associated with the buildings. The new copper lines provide connectivity to support service for telephone voice systems, emergency telephone lines, elevator telephones, and fax machines. It is the intent of ITS to now abandon the old lines and utilize the new copper lines. The new copper lines are installed at each major building on the campus which are then directly connected back to the campus's main computer communication center located at the Chavez Building (S). The architect's assessment is underway with ITS for the transition at each building from the old lines to the new lines. This project is required to be submitted to DSA for approval before it can be implemented.	\$474,339



## YEAR FIVE PROP 39 PROJECTS

### SANTA ANA COLLEGE LIGHTING OCCUPANCY SENSOR RETROFIT

#### Project Summary:

- ▶ This is a new project to spend down the surplus budget from the previous Year 5 project

#### Current Status:

- ▶ The contractor has completed 90% of the sensor upgrades
- ▶ The project is anticipated to be completed in May and closed out in June

#### Budget:

- ▶ \$150,000



## CURRENT PROJECTS DISTRICT-WIDE

PROJECT	STATUS	ESTIMATED BUDGET
District-Wide Emergency Blue Phone & ADA Path of Travel (SAC, SCC, CEC, DO, OCSRTA, DMC)	Bids for SAC are due on May 14, 2019 and bids for SCC are due on May 21, 2019. A mandatory job walk occurred at SAC on April 30, 2019 and a mandatory job walk occurred at SCC on May 7, 2019. DO and CEC have yet to be scheduled.	\$1.9 Million



# CURRENT PROJECTS DISTRICT-WIDE

PROJECT	STATUS	ESTIMATED BUDGET
District-Wide Access Control & Door Hardware Survey Assessments	<p>A. The District has decided to test pilot the installation of a new door access control system at the District Operations Center prior to a full roll out districtwide. The agreement for engineering consulting services was approved by the Board of Trustees on April 29, 2019.</p> <p>B. The project entails upgrading the existing access control system, adding new access control hardware &amp; readers at select locations, adding exterior door monitoring equipment, integrating into an existing district-wide access control platform, which is planned to be installed under the Science Center project.</p>	\$136,500
AR 6520 Safety of District Property – Keying Guidelines	C. A meeting was held with both Colleges members of President’s Cabinet to discuss the key hierarchy and organization of keying per building. A subsequent internal meeting will be scheduled to review the key distribution samples from other districts and Draft Administrative Regulation on procedures as this is currently a work in progress.	N/A
Future Retrofit & Access Control Project	D. AR 6520 will be updated once the guidelines are completely developed. A new plan will be developed as part of this planning process as the last step is to identify future projects, building door retrofits (i.e. hardware changes, for locks, access control, etc.). This is currently under review and in planning by the District.	TBD





## QUESTIONS