

Santa Ana College

EMERGENCY OPERATIONS PLAN TRAINING

Table Top Exercise

“EARTHQUAKE SCENARIO”


August 16, 2013



Objectives

- Simulate Activation of SAC EOC
- Set up and Identify EOC Operational Sections
- Utilize EOC structure to simulate receiving and distributing information (Lines of Communication)
- Implement up to five types of situations presented in the scenario for the Emergency Management Team to address
- Evaluate Overall Operational Efficiency

STATEWIDE SCENARIO

- The scenario outlines a hypothetical earthquake of 7.8 in which the earthquake would kill 1800 people, injure 50,000, cause \$200 billion in damage, and have long-lasting social and economic consequences
- 

STATEWIDE SCENARIO

- The strongest shaking and greatest damage is near the stretch of the San Andreas Fault that extends through the fastest growing areas of Southern California, including the Coachella Valley, Inland Empire and Antelope Valley.
- At least 10 million people will be exposed to heavy shaking.

STATEWIDE SCENARIO

- Around Southern California, there will be 1,600 fires started large enough to warrant a 911 call.
- Two thirds of the hospital beds are non-functional in Los Angeles, Orange, Riverside, and San Bernardino counties. 50,000 people will seek treatment at emergency rooms.
- The largest long-term economic disruption comes from damage to the water distribution system. Some buildings will be without water for as long as 6 months.

SAC Briefing Scenario

- All SAC buildings at the main campus, CEC, and CJTC need to be evacuated and assessed (roll call)
- There are vague initial reports of dead and injured on the SAC and CEC campuses (must be confirmed)
- The City infrastructure is severely damaged and local roads may be compromised . The extent is not known at this time. (needs to be confirmed)
- Power is out, phone lines are not working, cell phones work intermittently, and text messaging is available. Some buildings have water and plumbing. Other buildings have no water and there is a flow of water streaming into the air from a fire hydrant on campus south of the A Bldg..
- Large groups of campus and community members are reported on both campuses looking for direction and assistance.
- The local news media is showing up on campus looking for information.

What do we know

- Phones are hit and miss
- Cell phones work (how do we keep them working)
- Medical emergencies on our campus
- Buildings are compromised
- Water flowing causing a problem- flooding
- Electrical system seems to be working
- We need assistance

ICS is responsible for:

- Building triage and evaluation
- Medical triage and immediate care
- Building evacuation
- Campus employee and student safety on campus
- Public relations
- Facility issues

Incident Commander and EOC Staff

What ICS positions do we need immediately?

- Operations
- Safety
- PIO
- Planning
- Logistics
- Finance



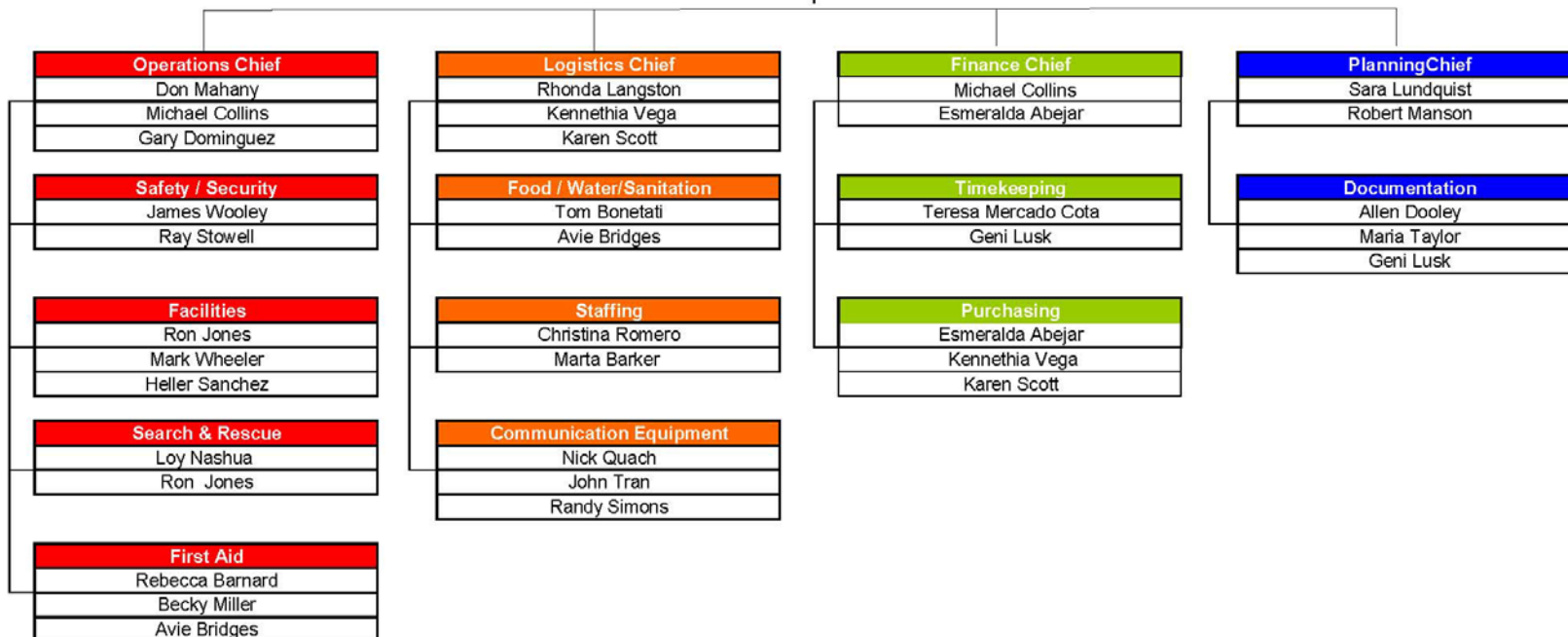
Santa Ana College **Incident Command Structure** 7/10/2013

Incident Commander
Erlinda Martinez
Linda Rose
Sara Lundquist
Michael Collins

Public Information Officer
Lilia Tanakeyowma
Jason Kehler
Micki Bryant

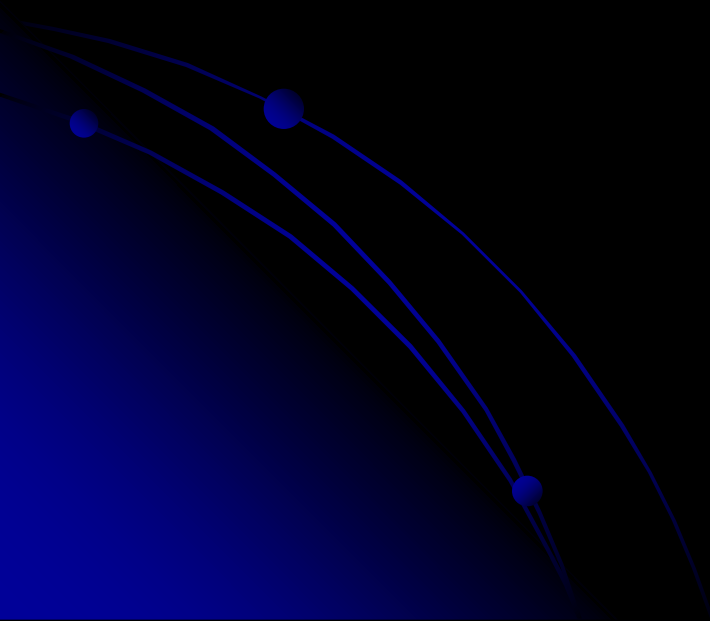
Safety Officer
Gary Dominguez
Bart Hoffman
Mark Liang

Liason Officer
Linda Rose
Don Mahany
Bart Hoffman



General Staff

1. Operations
2. Planning
3. Logistics
4. Finance

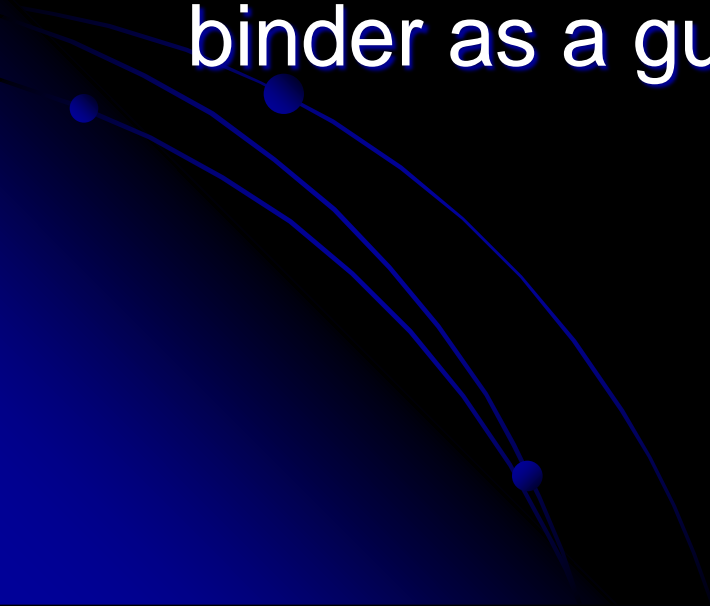


Command Staff

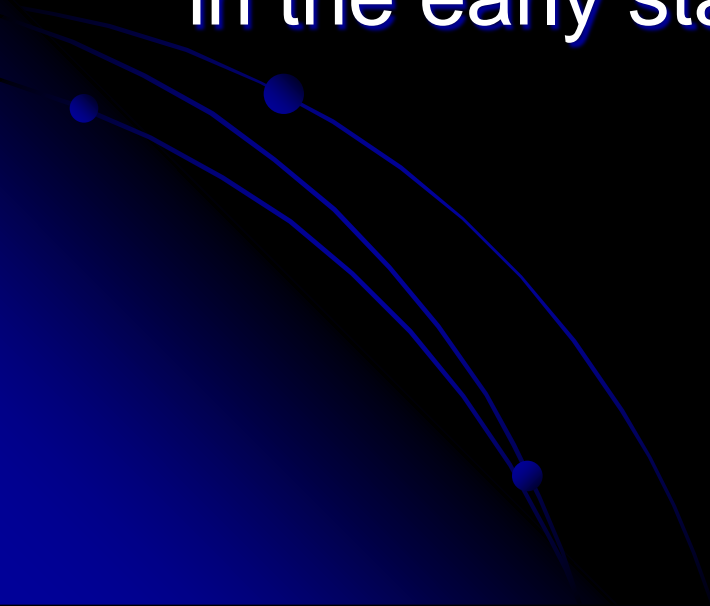
1. PIO Public Information Office
2. Safety Officer
3. Liaison

**** Command staff has direct access to the Incident Commander at all times if needed**

Break Into Your Assigned Team

- Look for your assigned job on the tables
 - Dynamic situations require great flexibility
 - Be prepared to step in and assist
 - Use your Emergency Operations Plan binder as a guidebook
- 

Operations

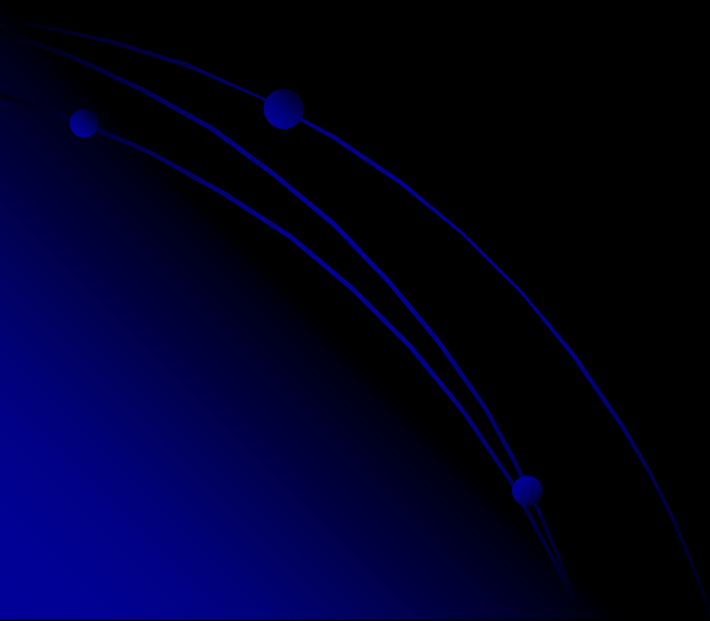
- Once the Operations Chief is established, the Incident Commander is no longer in charge of the operations of the incident
 - Many times the Operations Chief is the IC in the early stages of the incident
- 

Planning


- Where will SAC be in 12, 24, 36 hours down the line
- Brainstorms the possibilities ... "What if's"
- Think about.....
 - Who?
 - What?
 - Where ?
 - When?
 - How?
- Plan so as not to be taken by surprise!
- Think linearly

Logistics

- For all the planning- Logistics get it done!
- Campus resources, outside resources, timing, funding, locations, etc.

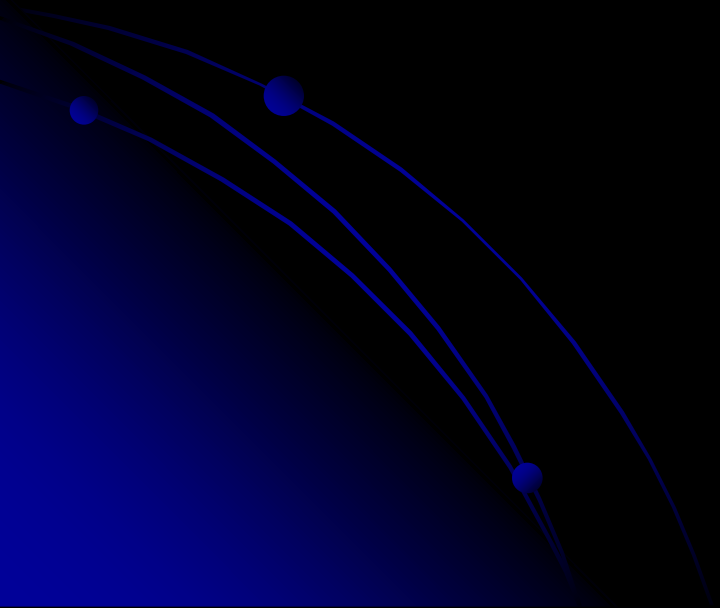


Finance


- We will pay for what we need- but how?
 - We must keep records for City and State Agencies, Homeland Security, FEMA, District/College accounts, HR department.
 - We must documents our expenses
- 

Update #1

Large crowds of community members are gathering at Parking Lot 6 and CEC looking for information and assistance.



Update #2

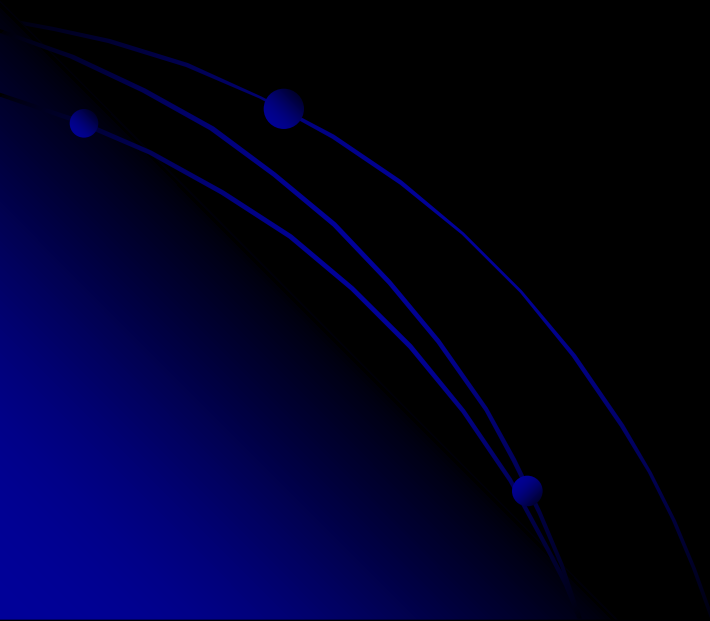
- Roll call at SAC indicates that 42 are injured and 2 are unconfirmed dead
 - CEC initial reports that 12 are injured and 1 unconfirmed dead.
- 

This is a building with a similar design to the
Johnson Center



Update #3

- SAC buildings R,E,S,A,T,H and P all have been evacuated and have visible signs of severe damage and collapse

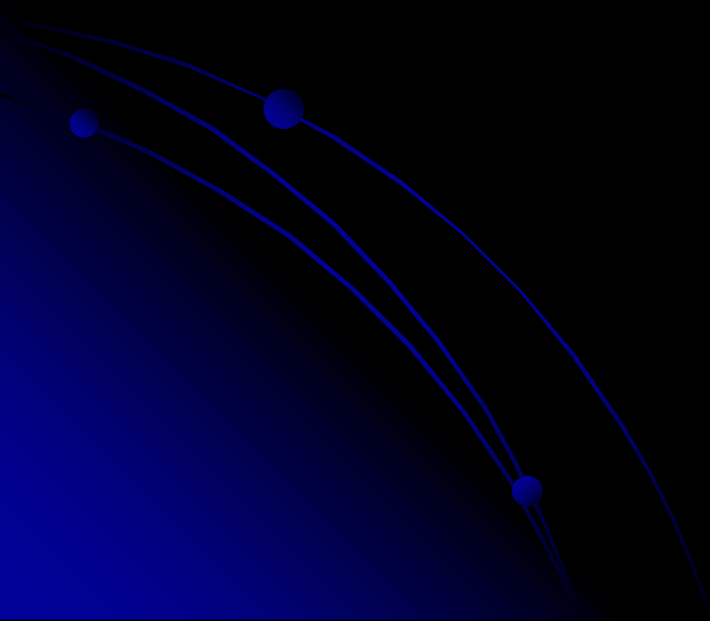


This is an example of an institution style building with significant impact to the roof line area starting at the left upper corner



Update #4

- The City of Santa Ana reports that the infrastructure and roads are severely compromised and is advising to shelter-in-place for the next 24 hours.



It is very possible the roads will be impacted with collapse debris and damaged vehicle

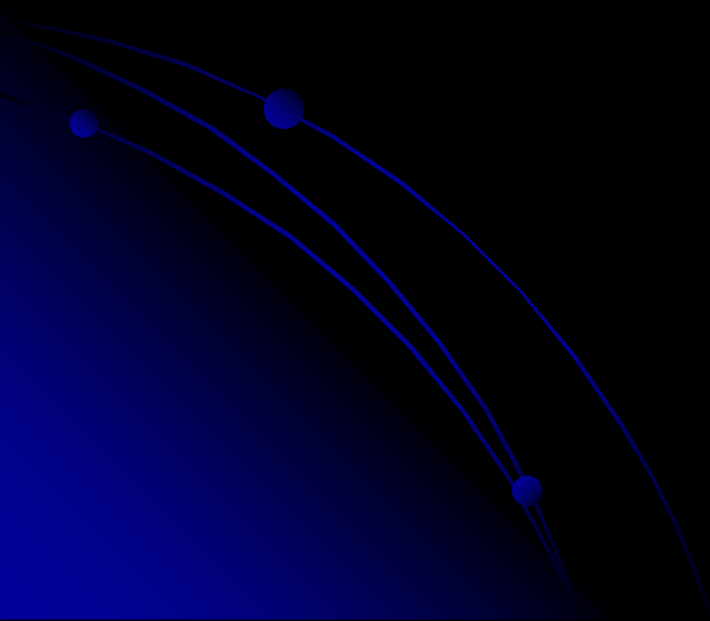


Here is a 110 ft boat 1.5 miles from the ocean. (Japan Tsunami)



Update #5

- OC Register and local news media are on the SAC campus requesting information from the College's PIO.



Learning Objectives- DID WE?

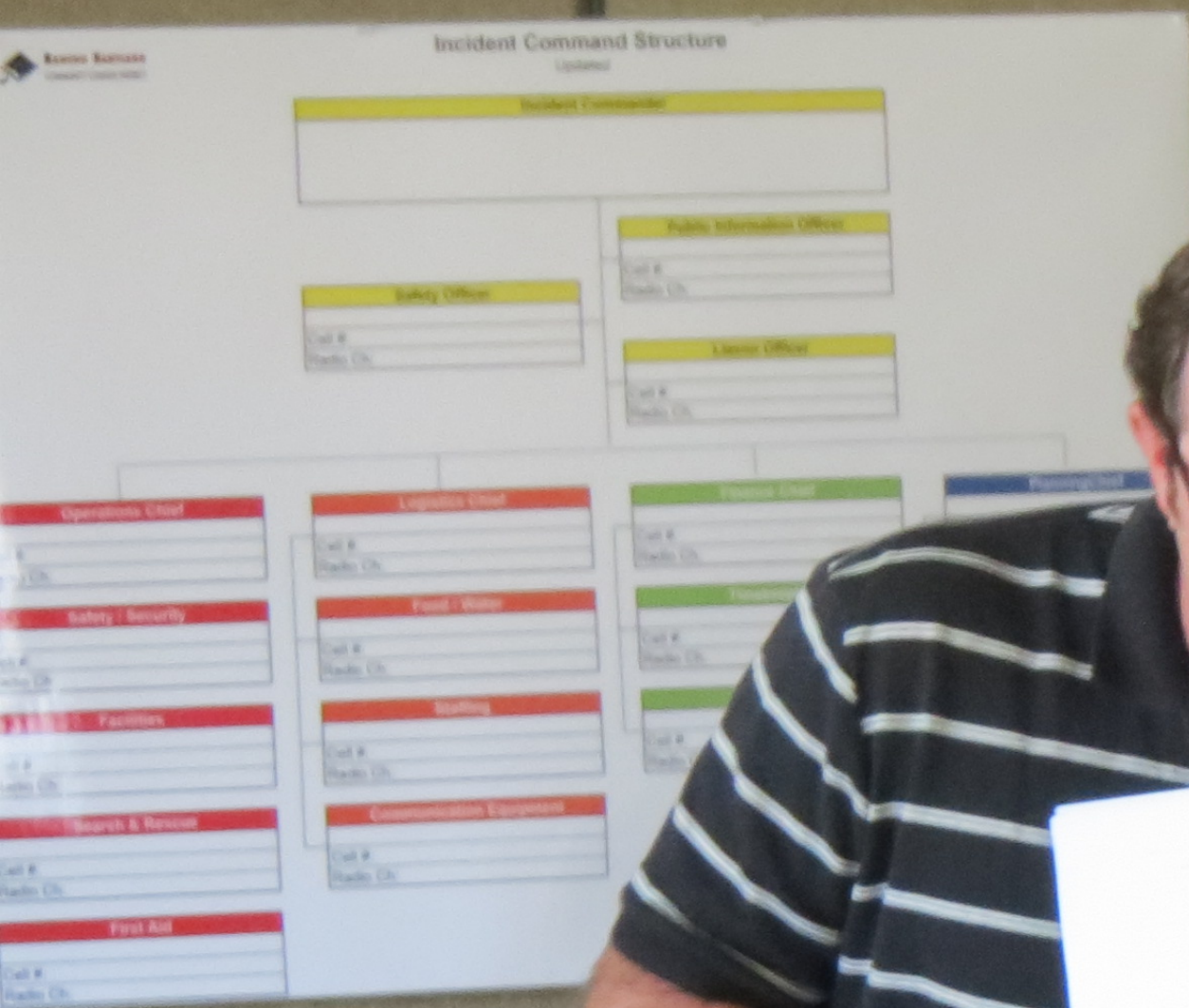
- Simulate activation of SAC EOC
- Set up and identify EOC Operational Sections
- Utilize EOC structure to simulate receiving and distributing information (Lines of Communication)
- Implement up to five types of situations presented in the scenario for the EOC to address
- Evaluate Overall Operational Efficiency

Santa Ana College Emergency Preparedness Training

It is not a matter of “if”, but “when”...

Success= Having a plan in place to handle
the incident

THANK YOUR FOR YOUR TIME!





- Building triage and evaluation
- Medical triage and immediate care
- Building evacuation
- Campus employee and student safety on campus
- Public relations
- Facility issues





**COMMUNICATIONS
EQUIPMENT**

Emergency Operations Plan