

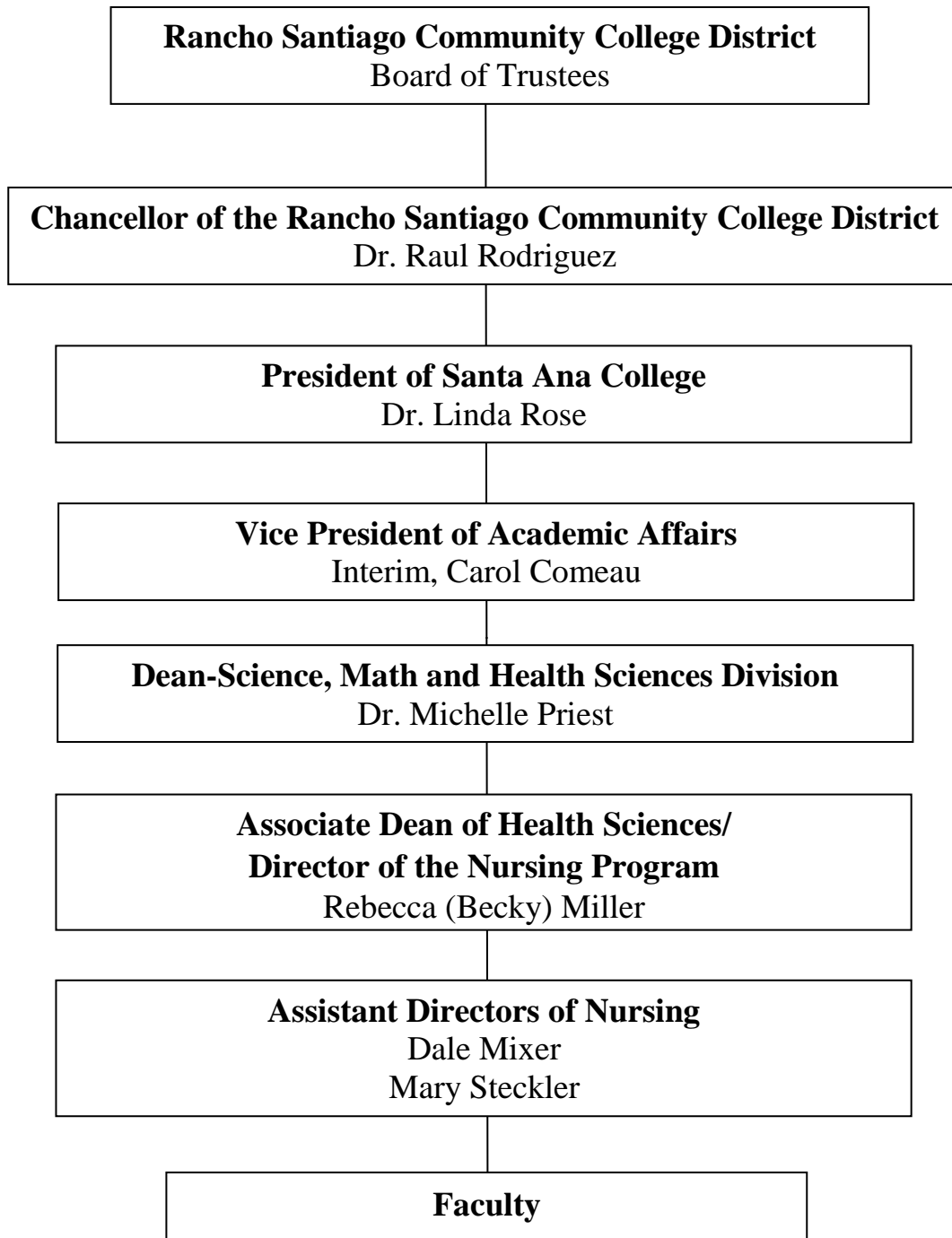
Santa Ana College
Nursing Student Guidebook Addendum

The following pages contain information to update all previous Nursing Student Guidebooks.

There has been a change to the RSCCD Administrative Organization Chart as well as the possible clinical sites. Please substitute these pages for the relevant pages in your Nursing Student Guidebook.

Additionally, there are changes to the list of faculty. Add Lisa Carriger to the list of faculty; she received her ADN from Saddleback College; BSN from University of Texas Arlington; and her MSN from University of Texas Arlington.

RSCCD ADMINISTRATIVE ORGANIZATIONAL CHART



CLINICAL FACILITIES

Clinical experiences are available at a variety of clinical facilities. Santa Ana College Nursing Department has contractual agreements with the following clinical facilities to provide clinical experience for students. Not all facilities will be utilized by all students.

	<u>Facility</u>	<u>Clinical Experience</u>
1.	Anaheim Regional Medical Center 1111 W. La Palma Ave. Anaheim, CA 92801 714-774-1450	Medical-Surgical Nursing
2.	Carehouse Convalescent Hospital 1800 Old Tustin Avenue Santa Ana, CA 92706 714-835-4900	Geriatrics Nursing
3.	Children's Hospital of Orange County 1109 West La Veta Orange, CA 92668 714-997-3000	Pediatrics Nursing Community-Based Nursing
4.	College Hospital 301 Victoria Street Costa Mesa, CA 92672 949-642-2734	Psychiatric Nursing
5.	College Hospital Partial Hospitalization Program 1634 19 th Street, Suite C Santa Ana, CA 92706 714-479-0102	Community-Based Nursing Psychiatric Nursing
6.	Fountain Valley Regional Hospital 17100 Euclid Fountain Valley, CA 714-979-1211	Medical-Surgical Nursing Obstetrical Nursing Pediatrics Nursing
7.	Hoag Memorial Hospital Presbyterian One Hoag Drive, Box 6100 Newport Beach, CA 92658 949-764-4624	Medical-Surgical Nursing Obstetrical Nursing
8.	Hospice Care of California 377 E. Chapman Ave., Suite 280 Placentia, CA 92870 800-889-3227	Community-Based Nursing
9.	Irvine Adult Day Health Services 20 Lake Road Irvine, CA 92604 949-262-1123	Geriatrics Nursing

- | | | |
|-----|---|--|
| 10. | Kaiser - Anaheim
3440 E. La Palma
Anaheim, CA 92806
714-644-7983 | Medical-Surgical Nursing
Obstetrical Nursing |
| 11. | Kaiser – Irvine
6640 Alton Parkway
Irvine, CA 92618
949-932-5000 | Medical-Surgical Nursing |
| 12. | Kindred Hospital – Santa Ana
1901 College Avenue
Santa Ana, CA 92706
714-564-7800 | Medical Surgical Nursing
Geriatrics Nursing |
| 13. | La Amistad Family Health Center
353 Main St.
Orange, CA
714-771-8006 | Community-Based Nursing |
| 14. | Maternal-Fetal Testing Center
St. Joseph Hospital
1140 W. La Veta
Orange, CA
714-633-9111 ext. 8713 | Community-Based Nursing |
| 15. | Mission Hospital
27700 Medical Center Road
Mission Viejo, Ca 92691
949-364-1400 | Medical Surgical Nursing |
| 16. | Mission Hospital Laguna Beach
31872 Coast Highway
Laguna Beach, CA
92651 949-499-1311 | Medical-Surgical Nursing
Psychiatric Nursing |
| 17. | Mother Baby Assessment Center
(St. Joseph Hospital)
1100 West Stewart Dr.
Orange, CA 92868
714-744-8764 | Community-Based Nursing |
| 18. | Oasis Senior Center
801 Narcissus
Corona Del Mar, CA 92625
949-644-3244 | Geriatrics Nursing |
| 19. | Orange County Global Medical Center
1001 North Tustin Avenue
Santa Ana, CA 92701
714-835-3555 | Medical-Surgical Nursing
Community-Based Nursing
Obstetrical Nursing |
| 20. | Placentia-Yorba Linda Unified School District
1301 E. Orangethorpe Ave.
Placentia, CA 92870 | Community Based Nursing |

714-986-7000

21. Regents Point
19191 Harvard Avenue
Irvine, CA 92612
949-988-0849
Geriatrics Nursing
22. Santa Ana College Health and
Wellness Center
1530 W. 17th St.
Santa Ana, CA 92706
714-564-6216
Community-Based Nursing
23. Santa Ana Unified School District
1601 E. Chestnut Ave.
Santa Ana, CA 92701
714-558-5501
Community-Based Nursing
24. Santiago Canyon College
Health Center
805 E. Chapman Ave.
Orange, CA 9869-4512
714-628-4773
Community-Based Nursing
25. Silverado Senior Center
350 W. Bay Street
Costa Mesa, CA 92627
949-258-7109
Community-Based Nursing
26. South Coast Global Medical Center
2107 S. Bristol Street
Costa Mesa, CA 92704
714-754-5454
Medical-Surgical Nursing
Geriatrics Nursing
Community-Based Nursing
27. St. Joseph Home Health
Nurse Family Partnership
1845 W. Orangewood Ave. Suite 200
Orange, CA 92868
714-712-9500
Community-Based Nursing
28. St. Joseph Hospital
1100 Stewart Drive
Orange, CA 92688
714-633-9111
Medical-Surgical Nursing
Psychiatric Nursing
Obstetrical Nursing
29. St. Jude Medical Center
101 E. Valencia Mesa Drive
Fullerton, CA 92643
714-871-3280
Medical-Surgical Nursing
30. St. Jude Neighborhood Health Center
731 S. Highland
Community-Based Nursing

Fullerton, CA 92832
714-446-5100

- | | | |
|-----|---|--|
| 31. | University of California, Irvine Medical Center
101 City Drive South
Irvine, CA 92668
714-456-6610 | Medical-Surgical Nursing
Psychiatric Nursing
Community-Based Nursing |
| 32. | VIP Adult Day Care Center
1101 S. Grand Ave.
Santa Ana, CA 92705
714-558-1216 | Geriatrics Nursing
Psychiatric Nursing |
| 33. | VIP Adult Day Care Center
1158 N. Knowlwood Circle
Anaheim, CA 92801
714-220-2114 | Geriatrics Nursing
Psychiatric Nursing |

SANTA ANA COLLEGE
REGISTERED NURSING PROGRAM ORGANIZATION

