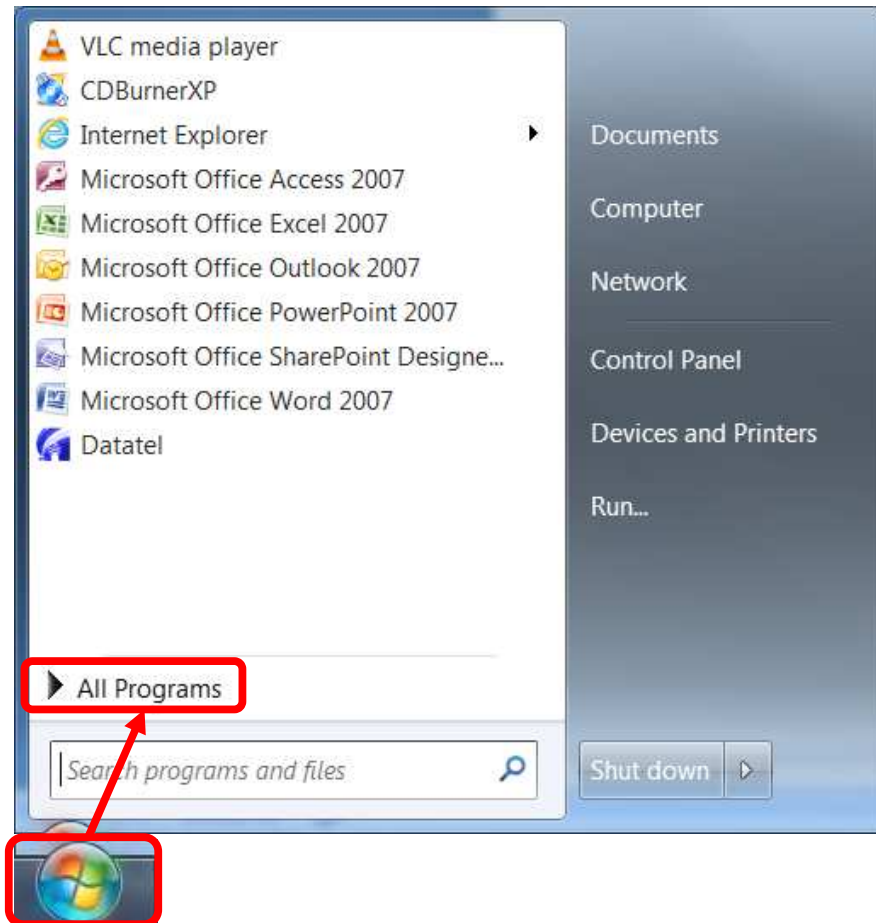


Accessing Mozilla Firefox from Administrative Computers

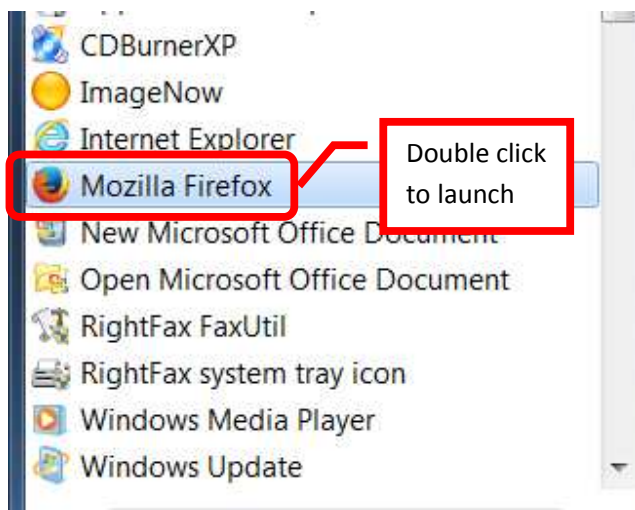
All District administrative computers have Internet Explorer (primary) and Mozilla Firefox (secondary) browsers installed. While IE is the primary browser, Mozilla Firefox is available for use on all computers.

To access Mozilla Firefox:

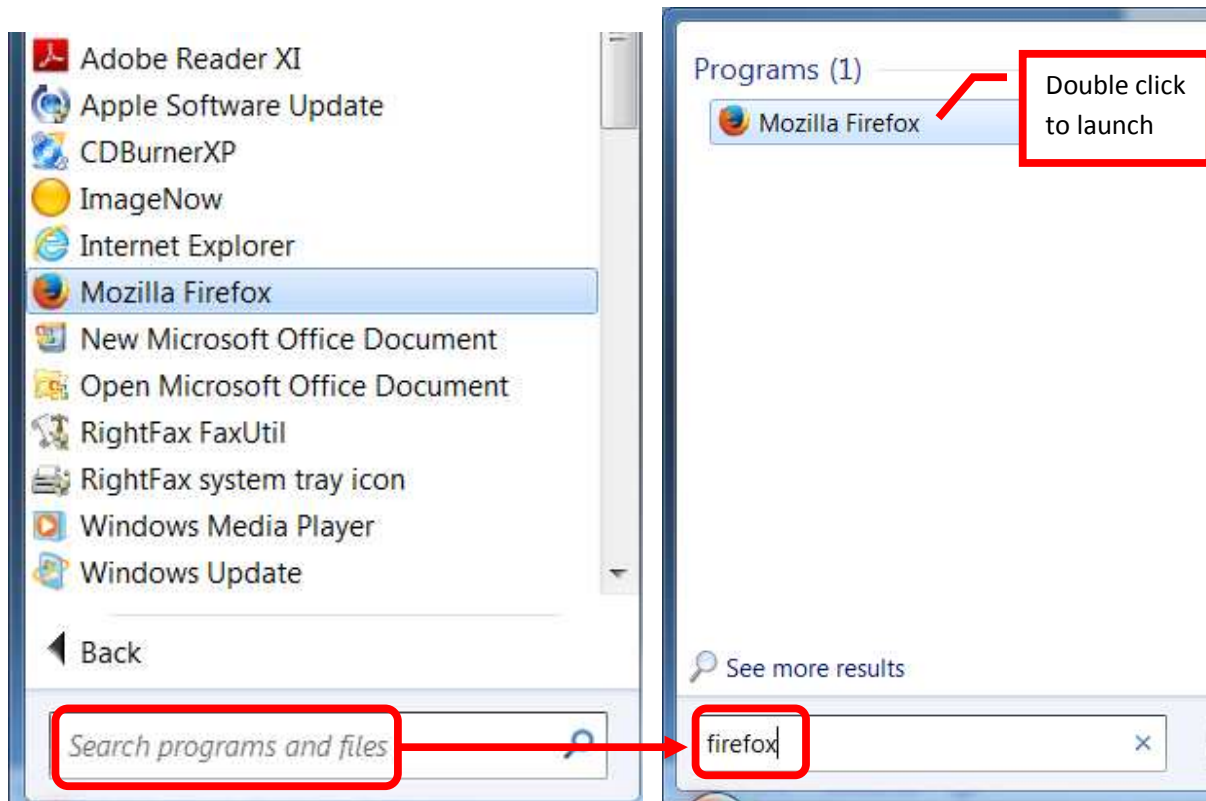
1. Click the “Start” button in the bottom left corner of the window, then “All Programs.”



2. Scroll down to “Mozilla Firefox.” Double click to launch the browser.

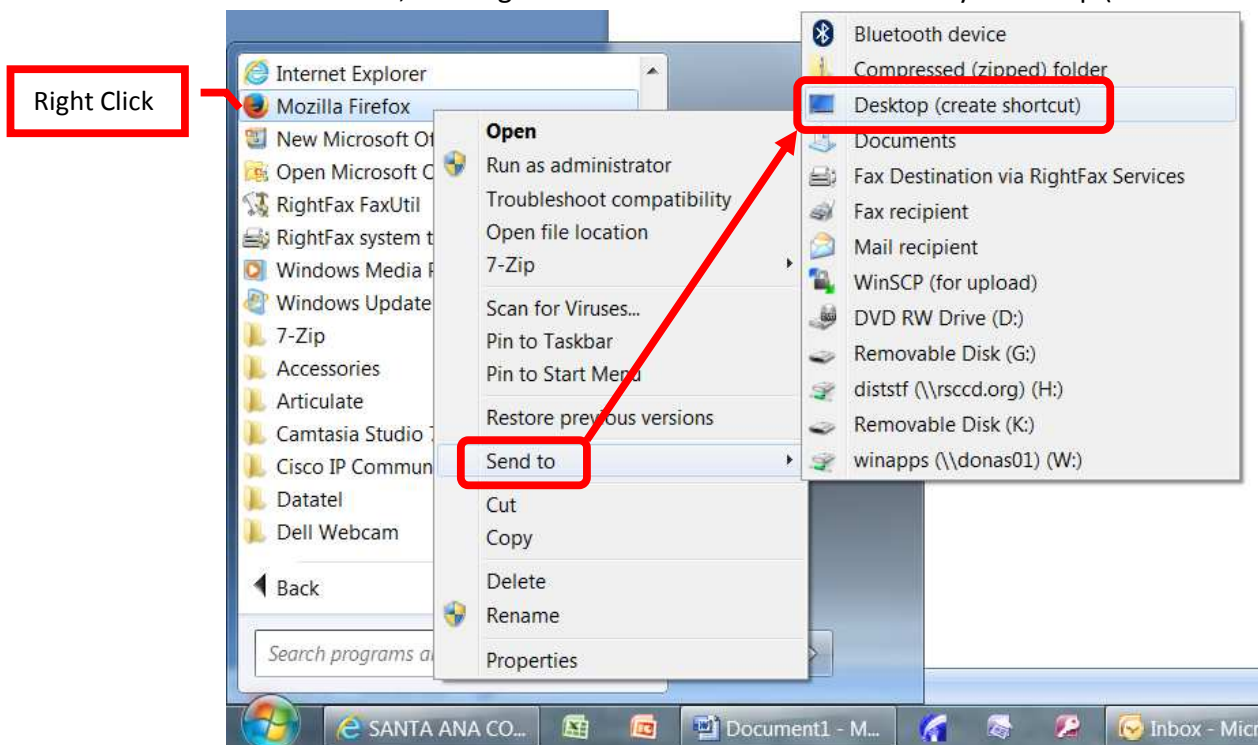


3. If Mozilla Firefox is not listed in the All Programs list, click the "Start" button and enter "Firefox" in the "Search Programs and Files" field. Press <Enter>. Double click on "Mozilla Firefox" to launch the browser.



To Create a Desktop Shortcut for Mozilla:

1. Access Mozilla Firefox as outlined above, but do not double click to launch the browser. Instead, click once to select Firefox, then right click. Select "Send To" and finally "Desktop (Create Shortcut)".



2. The shortcut for Mozilla Firefox will appear on the desktop.

