

---

## **Central Utility Plant and Infrastructure Project**

**RSCCD Project Manager:** Dave Gonzales

**Architect:** Westberg + White Architects

**Construction Manager:** Linik Corp.

**Contractor:** McCarthy Building Companies

**Contract Start:** 10/12/15

**Contract Completion:** 04/13/18

---

**Scope:** Construction of a new central plant building, a new electrical building, utility replacement, and mechanical upgrades to 7 buildings connecting them to the new central plant building. Site improvements include an underground chilled water piping loop, new gas, electrical, domestic water lines, sewer, drainage and fire water systems. New landscaping and hardscape will be replaced following the infrastructure improvements.

### **Recent Construction Activities:**

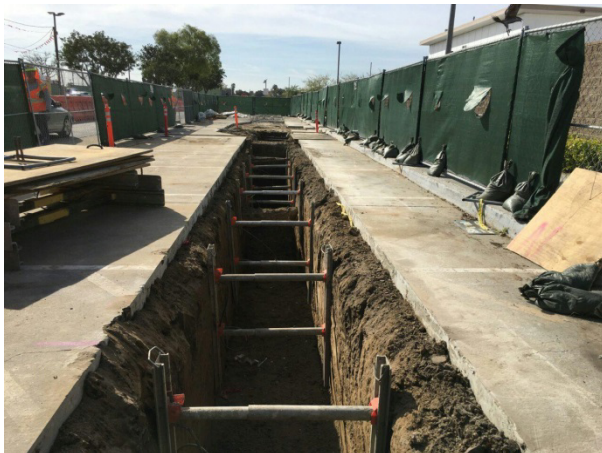
- Install temp. fencing, clear, grub landscaping, demo and export (Phase 3A.3)
- Install domestic water piping (Phase 1 and 2)
- Concrete encase conduits (Phase 1)
- Install power and signal conduits at Central Plant
- Welding Area Concrete Restoration

### **Current Activities:**

- Install temp. fencing, clear, grub landscaping, demo and export (Phase 3A.4)
- Excavate/install power and signal conduits along Campus Drive (Phase 2)
- Excavate trench for chilled water and gas (Phase 1)
- Layout, excavate and install underground utilities at Central Plant

### **Upcoming Activities:**

- Excavate trench for water and firewater (Phase 3A)
- Excavate trench for chilled water and gas along Campus Drive (Phase 2)
- Excavate and place SCE vaults at Electrical Building



**Excavate/install power and signal conduits along Campus Drive (Phase 2)**



**Welding Area Concrete Restoration**